



Bourdon Tube Pressure Gauges

Refrigeration Ammonia Gauge

All Stainless Steel Construction

Industrial Series Liquid Fillable • Dry Case

Type 23X.53AM

Pressure Gauges

Application

Suitable for refrigeration ammonia or other liquid or gaseous media which is compatible with 316 stainless steel and will not obstruct the pressure system.

Sizes

2½" and 4" (63, 100 mm)

Accuracy

2½" ± 1.5% of span

4" ± 1.0% of span (ASME B40.1 Grade 1A)

Ranges

30"Hg / 0 / 150 PSI (84°F)

30"Hg / 0 / 300 PSI (126°F)

Working Range

2½" Steady: 3/4 of full scale value
Fluctuating: 2/3 of full scale value
Short time: full scale value

4" Steady: Full scale value
Fluctuating: 0.9 x full scale value
Short time: 1.3 x full scale value

Operating Temperature

Ambient: -40°F to 140°F (-40°C to 60°C)

Media: max. 212°F (+100°C)

Temperature Error

Additional error when temperature changes from reference temperature of 68°F (20°C) ±0.4% for every 18°F (10°C) rising or falling. Percentage of span.

Standard Features

Connection

Material: 316 stainless steel

Lower mount (LM)

1/4" NPT

Bourdon Tube

Material: 316 stainless steel, C-type

Movement

Stainless steel

Dial

White aluminum with black lettering. 2½" with stop pin

Pointer

Black aluminum

Case

304 stainless steel with vent plug and SS crimping ring.

EPDM o-ring between case and connection (4")

Welded case/socket connection (2½")

Weather Protection

Weather resistant (NEMA 3 / IP 54)

Weathertight (NEMA 4X / IP 65) liquid filled case

Standard Scale

PSI / °F

Window Gasket

Buna-N

Window

Polycarbonate (2½")

Acrylic (4")

ORDER OPTIONS (min. order may apply)

Custom dial layout

Stainless steel

316 SS threaded restrictor

Special connections limited to wrench flat area

Other pressure scales available:

Bar, kPa, MPa, Kg/cm², °C and dual scales

DIN standards

Externally adjustable red drag pointer (max. hand)

Externally adjustable red mark pointer (set pointer)

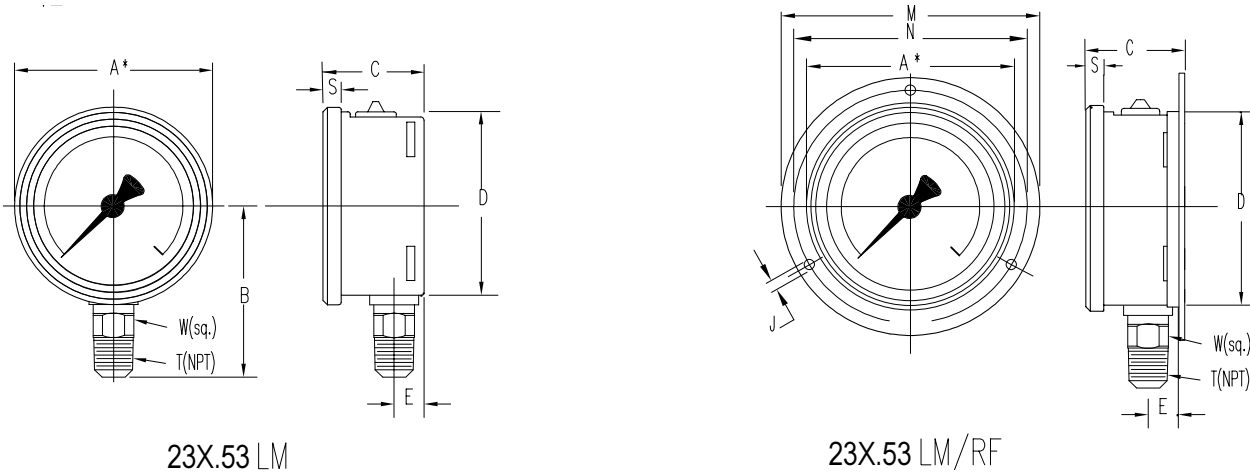
Glycerine, silicone or fluorolube case filling (Type 233.53AM)



APM 23X.53AM

(APM 02.13.1)

Dimensions:



A* NOMINAL SIZE

TYPE/SIZE	WEIGHT	KEY	A*	B (1)	C	D	E	J	M	N	S	T	W
23X.53 2.5"	0.36 lbs. +0.08 lbs. if filled	mm	63	54	32	62	13	3.6	85	75	6.5	--	14
		in	2.5	2.13	1.26	2.44	0.51	0.14	3.35	2.95	0.26	1/4"	0.55
23X.53 4"	1.10 lbs. +0.66 lbs. if filled	mm	100	87	48	100	15.5	4.8	132	116	8	--	22
		in	4	3.43	1.89	3.94	0.61	0.19	5.20	4.57	0.31	1/2"	0.87

(1) For 4" gauges with 1/4" NPT connections, B* dimension changes to 82 mm (3.23 in.).

THE MEASURE OF
Total Performance™

Ordering Information:

State computer part number (if available) / type number / size / range / connection size and location / options required.

Specifications given in this price list represent the state of engineering at the time of printing. Modifications may take place and the specified materials may change without prior notice

05/01



WIKAI Instrument Corporation
1000 Wiegand Boulevard
Lawrenceville, Georgia 30043-5868
Tel: 770-513-8200 Fax: 770-338-5118
<http://www.wika.com> e-mail: info@wika.com