

## TSSM

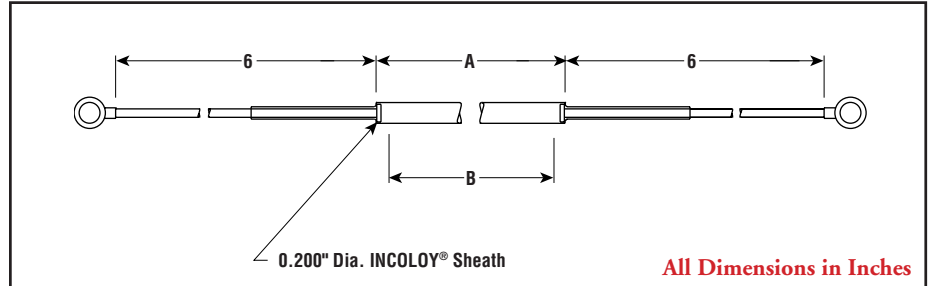
.200" Dia.  
Round Cross-Section

- INCOLOY® Sheath
- 75 - 1,200 Watts
- 28, 57.7 and 115 Volt
- 29 - 49 W/In<sup>2</sup>
- 1600°F Max. Sheath Temp.



TUBULAR

### Dimensions



### Applications

Compasses and gyroscopes, tubing "wrap-arounds," oil igniters and burning off flue gases.

### Advantages

**An Extremely Versatile Element** — Used where just a little heat is needed or where a high temperature is needed quickly in a tight spot. Heat-up is fast due to the small mass of the element.

**Flexible** — Easily forms to a wide range of configurations.

### Features

**Type 34 Terminals** — Standard with high temperature leads attached to sheath. See terminal detail drawing in the Tubular Heater Overview section.

**Work Temperatures** — See Tubular Heater Overview section.

**Bending** — Customer's minimum inside bending radius is 5/8". See bending requirements in the Tubular Heater Overview section.

### Specifications and Ordering Information

Watts	Volts	W/In <sup>2</sup>	Dimensions (In.)		INCOLOY® Sheath			Wt. (Lbs.)
			Sheath A	Heated B	Model	Stock	PCN	
75	28	40	6	3	TSSM-6	S	143319	0.1
110	57.7	35	8	5	TSSM-8	S	143327	0.1
150	57.7	34	10	7	TSSM-10	S	143335	0.1
175	115	31	12	9	TSSM-12	S	143343	0.1
225	115	33	14	11	TSSM-14	S	143351	0.1
275	115	34	16	13	TSSM-16	S	143360	0.2
300	115	32	18	15	TSSM-18	S	143378	0.2
350	115	33	20	17	TSSM-20	S	143386	0.2
830	115	49	30	27	TSSM-30	S	143394	0.2
1,120	115	48	40	37	TSSM-40	S	143407	0.3
1,400	115	47	50	47	TSSM-50	S	143415	0.3
1,400	115	29	60	57	TSSM-60	NS	143423	0.4
1,200	115	29	70	67	TSSM-70	S	143431	0.5

**Stock Status:** S = stock AS = assembly stock NS = non-stock  
**To Order**—Specify model, PCN, watts, volts and quantity.