



Safety Switch

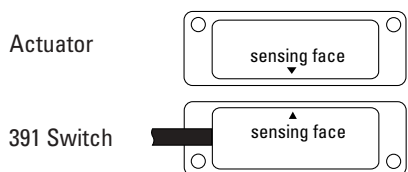
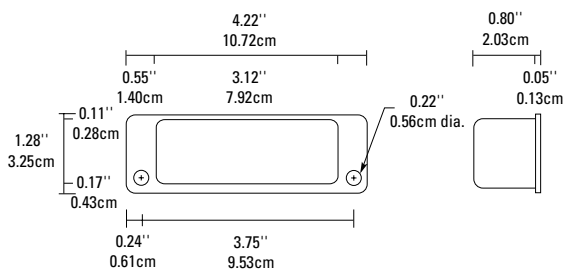
391-BT GuardSwitch

Applications

- Machine Tool Machinery
- Withstands Corrosive and Extreme Washdown Environments
- Packaging Machinery
- Food Processing Machinery
- Presses
- Meets ANSI, Semi S2 & European Safety Standard for the Highest Machine Risk Category 4 when used with the INT Safety Relay

General Specifications

Enclosure	Seamless 304 Stainless Steel
Temperature Range	-40°F to 180°F (-40°C to 80°C)
Environmental	Hermetically Sealed Contact Switch Encapsulated in Polyurethane
NEMA Rating	1, 2, 4, 4X, 5, 12, 12K
Protection Class	IP 67
Response Time	1 msec
(individual circuits)	The two circuits do not switch simultaneously and depend on the speed of the guard closure. A delay less than 50 msec is typical.
Life Cycles	100,000 Under Full Load; Up to 200,000,000 Under Dry Circuit
Lead Types/O.D.	18/4 SJTOW (K) / 0.34" (0.86cm) 22/4 PVC Jacketed (J) / 0.19" (0.48cm)
UL/CSA/TUV	All Models



Electrical Specifications

Circuit No.	Circuit Type	Contact Config.	Load Rating	MAX Switching Voltage	MAX Switching Current
1	Switch	N.O.	40W/VA	48VAC/VDC	1.0ADC, 0.7AC
2	Tamper	N.C.	10W/VA	48VAC/VDC	0.3A
2	w/optional LED	N.C.	0.1-1.4W	48VDC(3V drop)	30mA



Order Information

Part Number	Contact ¹ Configuration	Sense Range ² Minimum	Sense Range ² Maximum	Break Range	Lead Length
391-BT-06(K)	DPST: 1 N.O., 1 N.C.	0.3"(0.8cm)	0.6"(1.5cm)	1.2"(3.0cm)	6' (1.8m)
391-BLT-12(J)	DPST: 1 N.O., 1 N.C. w/ LED	0.3"(0.8cm)	0.6"(1.5cm)	1.2"(3.0cm)	12' (3.6m)

Warning— Each electrical rating is an individual maximum and cannot be exceeded!

¹ Configuration with actuator away from the switch

² Proximity of ferrous materials usually reduces sense range — typically by 50%. The shape and type of material cause a wide diversity of effects. Testing is required to determine actual sense range for specific applications.