

# Recessed Pin Plunger

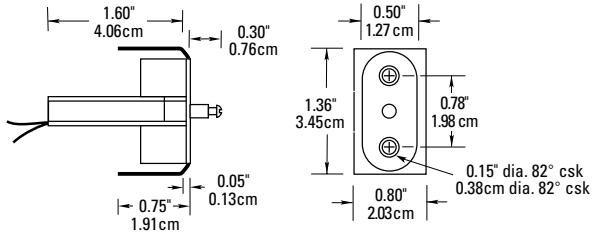
## 3010 Series

### Applications

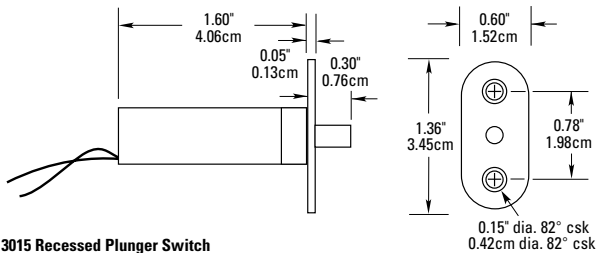
- Model 3015 available in plate mount or clip mount configuration
- Model 3025 plunger self-adjusts to proper reach
  - Pulling out on plunger shunts switch
  - Disconnection while servicing equipment is unnecessary

### General Specifications

Enclosure	ABS plastic
Temperature Range	-40°F to 150°F (-40°C to 65°C)
Environmental	Contact Housing is made of flame-retardant ABS plastic. Reed switch is protected and held in place by a polyurethane potting material
NEMA Rating	1
Protection Class	IP 62
Response Time	1 msec max.
Life Cycles	100,000 Under Full Load, 10,000,000 Under Dry Circuit
Lead Types/O.D.	#22 wire / 0.05" (0.15cm)
Color Choices	Natural (N), Mahogany (M)
UL Listed	All Models

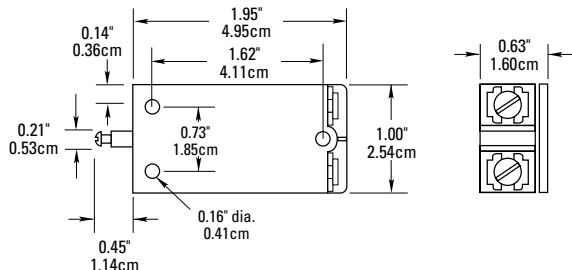


3012 Clip Mount Plunger



3015 Recessed Plunger Switch

Includes: 1- Adjustable #6 x 32 1/2" Phillips screw



3025 Tamper Switch



### Order Information

### Electrical Specifications

Part Number	Contact Configuration	Load Rating (AC/DC)	Switching Voltage (AC/DC)	Switching Current (AC/DC)	Contact Resistance	Lead Length
3012-M, N	N.O.	7.5W/VA	100V	0.5A	0.2 Ohms	1'
3015-M, N	N.O.	7.5W/VA	100V	0.5A	0.2 Ohms	1'
3027-M, N	SPDT	3W/VA	30V	0.25A	0.2 Ohms	1'
3025T-M, N	N.O.	7.5W/VA	100V	0.5A	0.2 Ohms	#6 Screw Terminal

Warning— Each electrical rating is an individual maximum and cannot be exceeded!

<sup>1</sup> Configuration with plunger out.