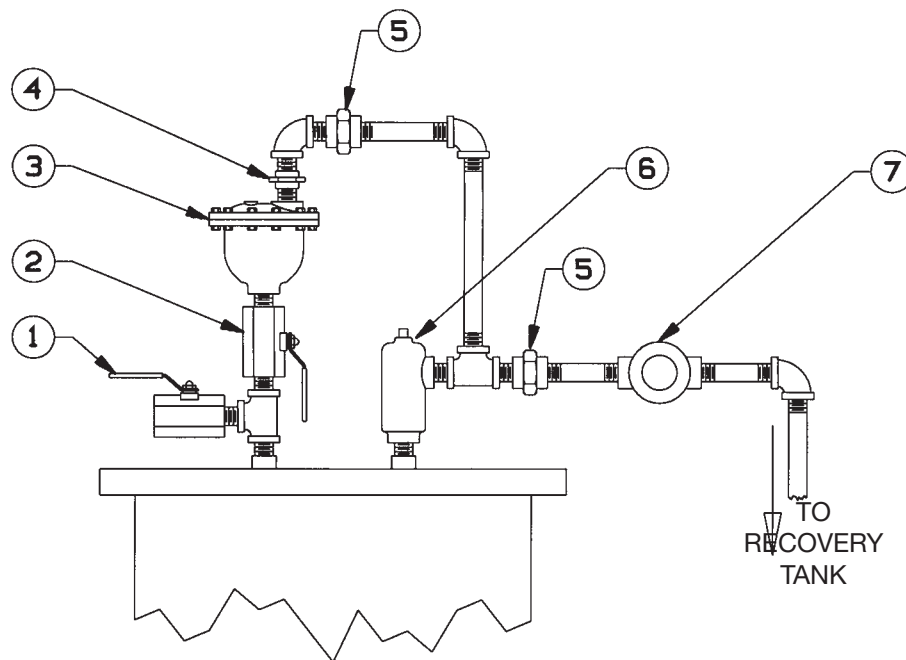





Auto Air Eliminator & Relief Valve Hook-Up

Typical Arrangement for Filter/Separator





1. Ball Valve – Close for normal operation. Open when filling or draining the vessel.
2. Ball Valve – (Optional) Open for normal operation. Close when air eliminator is to be removed for service.
3. Automatic Air Eliminator
4. Check Valve – Prevents air from siphoning into vessel
5. Pipe Unions
6. Pressure Relief Valve – Set at maximum working pressure (design pressure) of vessel or lower
7. Flow Indicator (Optional)

Adapters/Hardware

Element ID:	2"	2 ¼"	2 ½"	3 ½"*		4 ½"*
APPLICATION:	SO-3xxV SO-3xxV5	CO-718CE LA-71801B	FO-718PL FO-6xxFGA	I-6xxxx FO-6xxPL FO-6xxFG SO-6xxC SO-6xxPL	SO-4xxC SO-4xxV SO-4xxV5 SO-6xxCA SO-6xxVA SO-6xxVA5	SO-6xxCM SO-6xxV SO-6xxV5
Mounting Adapter (includes glued-on gasket) 	12-02S (Gasket: G-0131)	12-02S (Gasket: G-0131)	12-02G (Gasket: G-1041)	12-02I (Gasket: G-0126) 12-02W(1)	12-02I (Gasket: G-0126) 12-02W(1)	12-02U (Gasket: G-0129A) 12-02Z (1)
Spacer (centerplate) 	N/A	12-02F	12-02A	12-02K (12-02T)	N/A	N/A
End Cap 	N/A	12-02M	12-02M	12-02C (12-02X)	N/A	N/A

*Note: Adapter part numbers shown have holes drilled for 3/8" diameter tie rods. Part numbers in parantheses have holes drilled for 1/2" diameter tie rods (Facet vessels).

	Element OD (in.) 6
	Applicable Element I-6xxxxTB
	Threaded Base Adapter 6000T
	Blind Cap Assembly (For use on any element) 60464

For additional adapter information contact Parker AFD at +1 719 531 5855 or vfsales@parker.com.