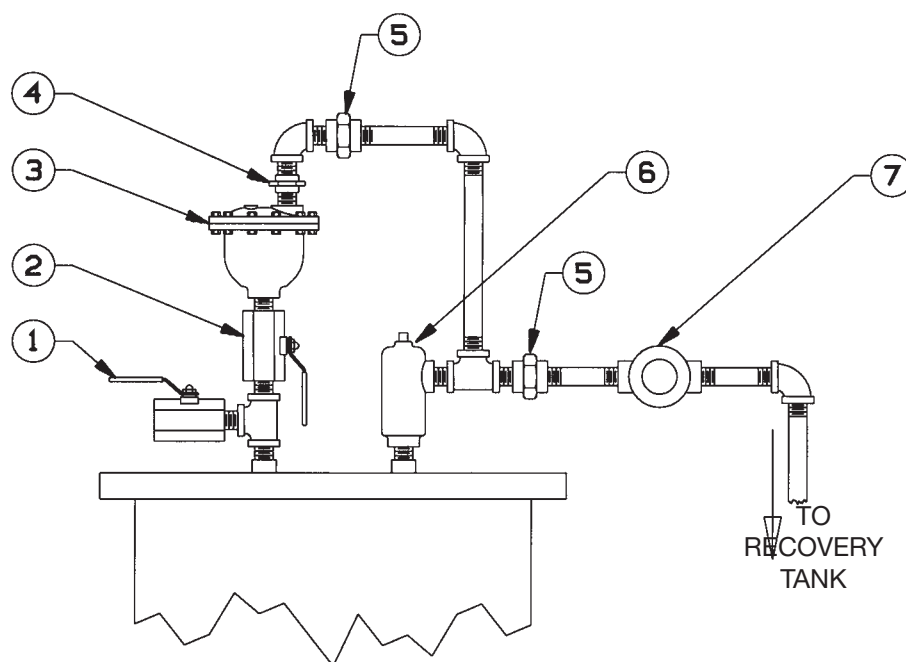


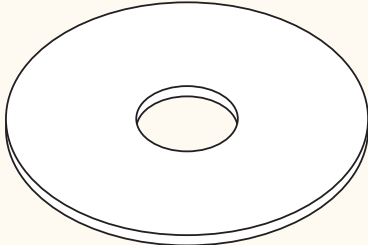
# Auto Air Eliminator & Relief Valve Hook-Up

Typical Arrangement for Filter/Separator



1. Ball Valve – Close for normal operation. Open when filling or draining the vessel.
2. Ball Valve – (Optional) Open for normal operation. Close when air eliminator is to be removed for service.
3. Automatic Air Eliminator
4. Check Valve – Prevents air from siphoning into vessel
5. Pipe Unions
6. Pressure Relief Valve – Set at maximum working pressure (design pressure) of vessel or lower
7. Flow Indicator (Optional)

# Nut & Washers

Size:	Diagram	3/8" (16NC)	1/2" (13NC)	5/8" (11NC)
Hex Nut		K07	K02	K19
Lock Washer		K05	K59	N/A
Flat Washer		K06	07-035	N/A
Tie Rod Gasket		G-0305	G-0313	N/A
Spider: Flat Washer (Large OD)		K87	K08	K18