

Quicklub® Lubrication Systems

Electric Grease Pumps—203 Series



P203 Series Pump

These pumps are electrically operated and are used in progressive-type automated lubrication systems. The proven and reliable P203 pump has been designed to develop high operating pressures allowing it to supply NLGI #2 grease in most ambient temperatures.

Versatile, compact and economical, this pump can be enhanced with several options including an integrated controller, low-level monitoring and system monitoring. Special configurations are available upon request.

Note: Customer must furnish a 12- or 24-volt D.C. power source.

Electric Grease Pumps with Integrated On/Off Controller

Output/Min Per Element**:	.171 cu. in. / 2.8 cc
Lubricant Outlet:	1/8" NPT (F)
Max. System Operating Pressure:	5000 psig / 350 bar
Enclosure Rating:	IP6K9K*
Operating Temperature Range:	Min. -13°F / -25°C / Max. 158°F / 70°C
Reservoir Capacity:	2-, 4-, 8- or 15-liter ***
Reservoir Fill Method:	By grease fitting
Pressure Relief Valve:	4000 psi, +/- 250 psi / 276 bar, +/- 17 bar

* Protected from water sprayed in all directions.

** Single 6mm element standard; to increase pump output, add one or two additional element(s) #600-26876-2 and relief valve #270864.

Model Specifications

Model No.	Electrical Requirements	Interval Timer Setting				Reservoir Capacity		
		On Time* (2 minute increments)		Off Time (1 hour increment)		lb.	kg.	liter
		Min	Max	Min	Max			
94012	12 VDC / 3.5 Amps	2 minutes	30 minutes	1 hour	15 hours	4	1.8	2
94412						8	3.6	4
94812						16	7.2	8
94812LDL						16	7.2	8
94024	24 VDC / 2 Amp	2 minutes	30 minutes	1 hour	15 hours	4	1.8	2
94424						8	3.6	4
94824						16	7.2	8
94824LDL						16	7.2	8
644-46278-1						30	13.6	15

* Can be set for either minutes or seconds.

Electric Grease Pumps Without Integrated Controller

Model Specifications

Model No.	Electrical Requirements	Reservoir Capacity		
		lb.	kg.	Liters
94224	24 VDC - 2 Amps	4	1.8	2
94212	12 VDC - 3.5 Amps			
644-46278-3	24 VDC - 2 Amps	30	13.6	15

Quicklub® Lubrication Systems

Electric Grease Pumps—203 Series



Electric Grease Pumps with Low-Level Sensor and Integrated Controller for Feedback Monitoring

Supplies NLGI #2 grease (depending on temperature) to divider valves.

Electrical Requirements

Input:	12 VDC @ 3.5 amps, 24 VDC @ 2 amps 94 - 265 VAC (50 to 60 Hz)
Enclosure Rating:	IP6K9K *
Interval Between Lube Cycles:	Min. 4 minutes / Max. 15 hours
Pump Output:	0.171 cu. in./min. / 2.8 cc/min.
Outlet Connection:	1/8" NPT (F)
Reservoir Capacity:	2-, 4-, 8- or 15-liter **
Maximum Recommended Operating Pressure:	5000 psi / 350 bar
Lubricant:	Greases NLGI grade 2 (depending on operating temperature and type of lubricant)
Temperature Range:	-13°F to 158°F / -25°C to 70°C
Pressure Relief Valve:	4000 psi, +/- 250 psi / 276 bar, +/- 17 bar

Note: Do not use pump without pressure relief valve.

* Protected from water sprayed in all directions.

Model Specifications

Model No.	Description	Power	Control Settings			Reservoir Capacity		
			Interval Between Lube Cycle Min.	Interval Between Lube Cycle Hrs.	Alarm Time Min.	Liters	In ³	Lbs.
94222	P203-2XL-1K6-24-2A6.15-M13-A+SV	24 VDC	4 - 60	1 -15	5 or 30	2	122	4
94422	P203-4XLBO-1K6-24-2A6.15-M13-A+SV	24 VDC	4 - 60	1 -15	5 or 30	4	244	8
94822	P203-8XLBO-1K6-24-2A6.15-M13-A+SV	24 VDC	4 - 60	1 -15	5 or 30	8	488	16
94822LDL	P203-8XL-1K6-24-2A6.15-M13-A+SV	24 VDC	4 - 60	1 - 15	5 or 30	8	488	16
644-40987-2	P203-15XL-1K6-24-2A6.15-M13-A+SV	24 VDC	4 - 60	1 -15	5 or 30	15	915	30
644-40821-6 *	P203-2XLBO-1K6-12-2A6.15-M08	12 VDC	4 - 60	1 -15	5 or 30	2	122	4
644-40843-8 *	P203-4XLBO-1K6-12-2A6.15-M08	12 VDC	4 - 60	1 -15	5 or 30	4	244	8
644-40822-8 *	P203-8XLBO-1K6-12-2A6.15-M16	12 VDC	4 - 60	1 -15	5 or 30	8	488	16
644-40873-1 *	P203-8XLBO-1K6-AC-3A6.01-M08	120 VAC	4 - 60	1 -15	5 or 30	8	488	16

*These "644-" pumps do not come with the pressure relief valve. It must be ordered separately and is recommended. The 1/8" NPT adapter (304-19614-1) is also not included and must be ordered separately, if required. None of the above pumps come with the proximity switch. This must be ordered separately.



Electric Grease Pump with RemoteLinc™ Technology

- Easily interfaces with OEM and aftermarket telematics systems
- Allows users to:
 - Remotely monitor and detect low lubricant levels and system faults.
 - Reduce cost by receiving immediate, real-time alerts when lubricant is low or the system is in fault.

Electrical Requirements

Input:	12 VDC @ 3.5 amps, 24 VDC @ 2 amps 94-265 VAC (50 to 60 Hz)
Enclosure Rating:	IP6K9K*
Interval Between Lube Cycles:	Min. 4 minutes / Max. 15 hours
Pump Output:	0.171 cu. in./min. / 2.8 cc/min.
Outlet Connection:	1/8" NPT (F)
Reservoir Capacity:	2-, 4-, 8- or 15-liter**
Maximum Recommended Operating Pressure:	5000 psi / 350 bar
Lubricant:	Greases NLGI grade 2 (depending on operating temperature and type of lubricant)
Temperature Range:	-13°F to +158°F / -25°C to +70°C
Pressure Relief Valve:	4000 psi, ±250 psi / 276 bar, ±17 bar

Model Specifications

Model No.	Voltage	Reservoir Capacity
94223-12	12VDC	2L
94423-12	12VDC	4L
94823-12	12VDC	8L
94223	24VDC	2L
94423	24VDC	4L
94423LDL	24VDC	4L (Lidless)
94823	24VDC	8L
94823LDL	24VDC	8L (Lidless)
94923	24VDC	15L
94223-AC	94-265VAC	2L
94423-AC	94-265VAC	4L
94823-AC	94-265VAC	8L

Quicklub® Lubrication Systems

Electric Grease Pumps—203 Series

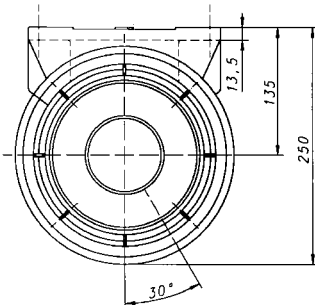
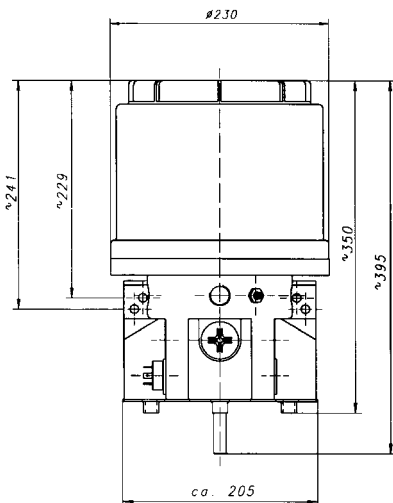


203 AC Models

This VAC pump automatically adjusts to handle a variety of electrical supply voltages (between 94- and 265-volt, 50 to 60 Hz.)

Input Voltage:	94 - 265 VAC, 3 Amps
Operating Temperature:	-13° to 158°F / -25° to 70°C
Number and Element Size:	1 - 6mm
Reservoir Capacity:	2-, 4-, 8- or 15-liter *
Output per Minute:	Approx. 2.8 cc / 0.171 cu. in. per min.
Lubricant:	Greases up to NGLI #2/Oil with at least 40 cSt
Max. Operating Pressure:	5076 psi / 350 bar

* Contact Lincoln for 15-liter reservoir models.



Model Specifications

Model No.	Description	Res. Cap.	Grease or Oil	Low level control	Printed circuit board
644-46073-5	P203-2XNBO-1K6-AC-1A1.01-V10 (UL)-A+SV	2 liter	Grease	No	Yes
644-46173-4	P203-4XNBO-1K6-AC-1A1.01-V10 (UL)-A+SV	4 liter	Grease	No	Yes
644-46173-5	P203-4YLBO-1K6-AC-1A1.01-V10 UL)-A+SV	4 liter	Oil	Yes	Yes
644-46073-6	P203-2XNBO-1K6-AC-1A1.01 (UL)-A+SV	2 liter	Grease	No	No
644-46173-6	P203-4XLBO-1K6-AC-2A1.01 (UL)-A+SV	4 liter	Grease	Yes	No
644-46173-8	P203-4YLBO-1K6-AC-1A1.01 (UL)-A+SV	4 liter	Oil	Yes	No
644-46173-7	P203-4XNBO-1K6-AC-1A1.01 (UL)-A+SV	4 liter	Grease	No	No
644-46174-2	P203-8XLBO-1K6-AC-2A1.01-V10 (UL)-A+SV	8 liter	Grease	Yes	Yes
644-46174-4	P203-8XLBO-1K6-AC-2A1.01 (UL)-A+SV	8 liter	Grease	Yes	No

"(UL)" in the description refers to UL-approved, CSA-certified pumps. Pumps with "-A+SV" come complete with the 1/8" NPT adapter and pressure relief valve.