



### P203 Series Pump

These pumps are electrically operated and are used in progressive-type automated lubrication systems. The proven and reliable P203 pump has been designed to develop high operating pressures allowing it to supply NLGI #2 grease in most ambient temperatures.

Versatile, compact and economical, this pump can be enhanced with several options including an integrated controller, low-level monitoring and system monitoring. Special configurations are available upon request.

**Note:** Customer must furnish a 12- or 24-volt D.C. power source.

### Electric Grease Pumps with Integrated On/Off Controller

|  |   |
|--|---|
| <b>Output/Min Per Element**:</b>       | .171 cu. in. / 2.8 cc                       |
| <b>Lubricant Outlet:</b>               | 1/8" NPT (F)                                |
| <b>Max. System Operating Pressure:</b> | 5000 psig / 350 bar                         |
| <b>Enclosure Rating:</b>               | IP6K9K*                                     |
| <b>Operating Temperature Range:</b>    | Min. -13°F / -25°C / Max. 158°F / 70°C      |
| <b>Reservoir Capacity:</b>             | 2-, 4-, 8- or 15-liter ***                  |
| <b>Reservoir Fill Method:</b>          | By grease fitting                           |
| <b>Pressure Relief Valve:</b>          | 4000 psi, +/- 250 psi / 276 bar, +/- 17 bar |

\* Protected from water sprayed in all directions.

\*\* Single 6mm element standard; to increase pump output, add one or two additional element(s) #600-26876-2 and relief valve #270864.

\*\*\* Pressure relief valve included with these models.

### Model Specifications

| Model No.   | Electrical Requirements | Interval Timer Setting            |            |                                |          | Reservoir Capacity |      |       |
|-------------|-------------------------|-----------------------------------|------------|--------------------------------|----------|--------------------|------|-------|
|             |                         | On Time*<br>(2 minute increments) |            | Off Time<br>(1 hour increment) |          | lb.                | kg.  | liter |
|             |                         | Min                               | Max        | Min                            | Max      |                    |      |       |
| 94012       | 12 VDC / 3.5 Amps       | 2 minutes                         | 30 minutes | 1 hour                         | 15 hours | 4                  | 1.8  | 2     |
| 94412       |                         |                                   |            |                                |          | 8                  | 3.6  | 4     |
| 94812       |                         |                                   |            |                                |          | 16                 | 7.2  | 8     |
| 94412LDL    |                         |                                   |            |                                |          | 8                  | 3.6  | 4     |
| 94812LDL    |                         |                                   |            |                                |          | 16                 | 7.2  | 8     |
| 94024       | 24 VDC / 2 Amp          | 2 minutes                         | 30 minutes | 1 hour                         | 15 hours | 4                  | 1.8  | 2     |
| 94424       |                         |                                   |            |                                |          | 8                  | 3.6  | 4     |
| 94824       |                         |                                   |            |                                |          | 16                 | 7.2  | 8     |
| 94824LDL    |                         |                                   |            |                                |          | 16                 | 7.2  | 8     |
| 644-46278-1 |                         |                                   |            |                                |          | 30                 | 13.6 | 15    |

\* Can be set for either minutes or seconds.

### Electric Grease Pumps Without Integrated Controller Model Specifications

| Model No.   | Electrical Requirements | Reservoir Capacity |      |        |
|-------------|-------------------------|--------------------|------|--------|
|             |                         | lb.                | kg.  | Liters |
| 94224       | 24 VDC - 2 Amps         | 4                  | 1.8  | 2      |
| 94212       | 12 VDC - 3.5 Amps       |                    |      |        |
| 644-46278-3 | 24 VDC - 2 Amps         | 30                 | 13.6 | 15     |



## Electric Grease Pumps with Low-Level Sensor and Integrated Controller for Feedback Monitoring

Supplies NLGI #2 grease (depending on temperature) to divider valves.

### Electrical Requirements

|  |   |
|--|---|
| <b>Input:</b>                                  | 12 VDC @ 3.5 amps, 24 VDC @ 2 amps 94 - 265 VAC (50 to 60 Hz)                   |
| <b>Enclosure Rating:</b>                       | IP6K9K *  |
| <b>Interval Between Lube Cycles:</b>           | Min. 4 minutes / Max. 15 hours  |
| <b>Pump Output:</b>                            | 0.171 cu. in./min. / 2.8 cc/min.  |
| <b>Outlet Connection:</b>                      | 1/8" NPT (F)  |
| <b>Reservoir Capacity:</b>                     | 2-, 4-, 8- or 15-liter **   |
| <b>Maximum Recommended Operating Pressure:</b> | 5000 psi / 350 bar  |
| <b>Lubricant:</b>                              | Greases NLGI grade 2 (depending on operating temperature and type of lubricant) |
| <b>Temperature Range:</b>                      | -13°F to 158°F / -25°C to 70°C  |
| <b>Pressure Relief Valve:</b>                  | 4000 psi, +/- 250 psi / 276 bar, +/- 17 bar                                     |

**Note:** Do not use pump without pressure relief valve. \* Protected from water sprayed in all directions.

## Model Specifications

| Model No.     | Description                       | Power   | Control Settings                 |                                  |                 | Reservoir Capacity |                 |      |
|---------------|-----------------------------------|---------|----------------------------------|----------------------------------|-----------------|--------------------|-----------------|------|
|               |                                   |         | Interval Between Lube Cycle Min. | Interval Between Lube Cycle Hrs. | Alarm Time Min. | Liters             | In <sup>3</sup> | Lbs. |
| 94222         | P203-2XL-1K6-24-2A6.15-M13-A+SV   | 24 VDC  | 4 - 60                           | 1 -15                            | 5 or 30         | 2                  | 122             | 4    |
| 94422         | P203-4XLBO-1K6-24-2A6.15-M13-A+SV | 24 VDC  | 4 - 60                           | 1 -15                            | 5 or 30         | 4                  | 244             | 8    |
| 94822         | P203-8XLBO-1K6-24-2A6.15-M13-A+SV | 24 VDC  | 4 - 60                           | 1 -15                            | 5 or 30         | 8                  | 488             | 16   |
| 94822LDL      | P203-8XL-1K6-24-2A6.15-M13-A+SV   | 24 VDC  | 4 - 60                           | 1 - 15                           | 5 or 30         | 8                  | 488             | 16   |
| 644-40987-2   | P203-15XL-1K6-24-2A6.15-M13-A+SV  | 24 VDC  | 4 - 60                           | 1 -15                            | 5 or 30         | 15                 | 915             | 30   |
| 644-40821-6 * | P203-2XLBO-1K6-12-2A6.15-M08      | 12 VDC  | 4 - 60                           | 1 -15                            | 5 or 30         | 2                  | 122             | 4    |
| 644-40843-8 * | P203-4XLBO-1K6-12-2A6.15-M08      | 12 VDC  | 4 - 60                           | 1 -15                            | 5 or 30         | 4                  | 244             | 8    |
| 644-40822-8 * | P203-8XLBO-1K6-12-2A6.15-M16      | 12 VDC  | 4 - 60                           | 1 -15                            | 5 or 30         | 8                  | 488             | 16   |
| 644-40873-1 * | P203-8XLBO-1K6-AC-3A6.15-M08      | 120 VAC | 4 - 60                           | 1 -15                            | 5 or 30         | 8                  | 488             | 16   |

\*These "644-" pumps do not come with the pressure relief valve. It must be ordered separately and is recommended. The 1/8" NPT adapter (304-19614-1) is also not included and must be ordered separately, if required. None of the above pumps come with the proximity switch. This must be ordered separately.



## Electric Grease Pump with RemoteLinc™ Technology

- Easily interfaces with OEM and aftermarket telematics systems
- Allows users to:
  - Remotely monitor and detect low lubricant levels and system faults.
  - Reduce cost by receiving immediate, real-time alerts when lubricant is low or the system is in fault.

### Electrical Requirements

|  |   |
|--|---|
| <b>Input:</b>                                  | 12 VDC @ 3.5 amps, 24 VDC @ 2 amps<br>94-265 VAC (50 to 60 Hz)                  |
| <b>Enclosure Rating:</b>                       | IP6K9K*   |
| <b>Interval Between Lube Cycles:</b>           | Min. 4 minutes / Max. 15 hours  |
| <b>Pump Output:</b>                            | 0.171 cu. in./min. / 2.8 cc/min.  |
| <b>Outlet Connection:</b>                      | 1/8" NPT (F)  |
| <b>Reservoir Capacity:</b>                     | 2-, 4-, 8- or 15-liter**  |
| <b>Maximum Recommended Operating Pressure:</b> | 5000 psi / 350 bar  |
| <b>Lubricant:</b>                              | Greases NLGI grade 2 (depending on operating temperature and type of lubricant) |
| <b>Temperature Range:</b>                      | -13°F to +158°F / -25°C to +70°C  |
| <b>Pressure Relief Valve:</b>                  | 4000 psi, ±250 psi / 276 bar, ±17 bar   |

## Model Specifications

| Model No. | Voltage   | Reservoir Capacity |
|-----------|-----------|--------------------|
| 94223-12  | 12VDC     | 2L                 |
| 94423-12  | 12VDC     | 4L                 |
| 94823-12  | 12VDC     | 8L                 |
| 94223     | 24VDC     | 2L                 |
| 94423     | 24VDC     | 4L                 |
| 94423LDL  | 24VDC     | 4L (Lidless)       |
| 94823     | 24VDC     | 8L                 |
| 94823LDL  | 24VDC     | 8L (Lidless)       |
| 94923     | 24VDC     | 15L                |
| 94223-AC  | 94-265VAC | 2L                 |
| 94423-AC  | 94-265VAC | 4L                 |
| 94823-AC  | 94-265VAC | 8L                 |

None of the above pumps come with a proximity switch. This must be ordered separately.

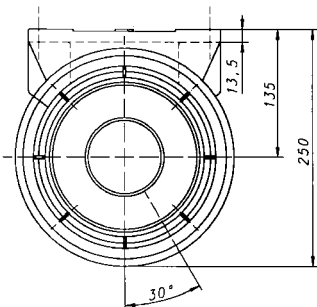
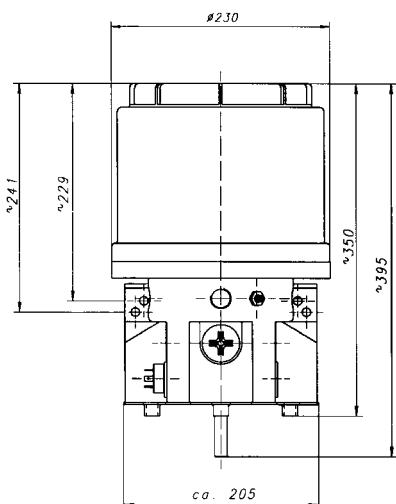


### 203 AC Models

This VAC pump automatically adjusts to handle a variety of electrical supply voltages (between 94- and 265-volt, 50 to 60 Hz.)

|                                 |  |
|---------------------------------|--|
| <b>Input Voltage:</b>           | 94 - 265 VAC, 3 Amps                           |
| <b>Operating Temperature:</b>   | -13° to 158°F / -25° to 70°C                   |
| <b>Number and Element Size:</b> | 1 - 6mm  |
| <b>Reservoir Capacity:</b>      | 2-, 4-, 8- or 15-liter *                       |
| <b>Output per Minute:</b>       | Approx. 2.8 cc / 0.171 cu. in. per min.        |
| <b>Lubricant:</b>               | Greases up to NGLI #2/Oil with at least 40 cSt |
| <b>Max. Operating Pressure:</b> | 5076 psi / 350 bar                             |

\* Contact Lincoln for 15-liter reservoir models.



### Model Specifications

| Model No.   | Description                            | Res. Cap. | Grease or Oil | Low level control | Printed circuit board |
|-------------|--|-----------|---------------|-------------------|-----------------------|
| 644-46073-5 | P203-2XNBO-1K6-AC-1A1.01-V10 (UL)-A+SV | 2 liter   | Grease        | No                | Yes                   |
| 644-46173-4 | P203-4XNBO-1K6-AC-1A1.01-V10 (UL)-A+SV | 4 liter   | Grease        | No                | Yes                   |
| 644-46173-5 | P203-4YLBO-1K6-AC-1A1.01-V10 UL)-A+SV  | 4 liter   | Oil           | Yes               | Yes                   |
| 644-46073-6 | P203-2XNBO-1K6-AC-1A1.01 (UL)-A+SV     | 2 liter   | Grease        | No                | No                    |
| 644-46173-6 | P203-4XLBO-1K6-AC-2A1.01 (UL)-A+SV     | 4 liter   | Grease        | Yes               | No                    |
| 644-46173-8 | P203-4YLBO-1K6-AC-1A1.01 (UL)-A+SV     | 4 liter   | Oil           | Yes               | No                    |
| 644-46173-7 | P203-4XNBO-1K6-AC-1A1.01 (UL)-A+SV     | 4 liter   | Grease        | No                | No                    |
| 644-46174-2 | P203-8XLBO-1K6-AC-2A1.01-V10 (UL)-A+SV | 8 liter   | Grease        | Yes               | Yes                   |
| 644-46174-4 | P203-8XLBO-1K6-AC-2A1.01 (UL)-A+SV     | 8 liter   | Grease        | Yes               | No                    |

"(UL)" in the description refers to UL-approved, CSA-certified pumps. Pumps with "-A+SV" come complete with the 1/8" NPT adapter and pressure relief valve.

# Quicklub® Lubrication Systems

## Identification Code—Pump Models 203



### Examples of Codes

#### Note

Any pumps combination other than the above standard pumps can be composed and ordered in accordance with the valid model identification code

Basic pump model for grease or oil with 1-3 outlets

#### Reservoir Design

2 = 2 l transparent plastic reservoir  
 4 = 4 l transparent plastic reservoir  
 8 = 8 l transparent plastic reservoir  
 15 = 15 l transparent plastic reservoir

X = reservoir for grease  
 Y = reservoir for oil

N = standard design  
 L = low-level control

without designation = standard reservoir (2 l)  
 BO = filling from top  
 FL = flat type reservoir (for 2l, no low level)

#### Pumping Element

1 - 3 number of elements

#### Piston Type - Piston Diameter (selection see page 20)

K5 - 5 mm  
 K6 - 6 mm  
 K7 - 7 mm  
 KR adjustable - 7 mm  
 B7 - 7 mm (outlet same as K5)  
 S7 - 7 mm (food industry)

#### Operating Voltage

12 VDC or 24 VDC (DC motor)  
 AC = 94 - 265 VAC (47 - 63 HZ) with 24 VDC motor

#### Number of Connection Possibilities

1A = 1 connector (left), power supply <sup>1</sup>  
 1A = 1 connector (left), power supply <sup>2</sup>  
 1A = 1 connector, power supply left + illuminated push button for additional lubrication, low level <sup>3,C</sup>  
 2A = 2 connectors, power supply (left) <sup>1,+</sup> illuminated push button for additional lubrication, low-level (right) <sup>1,C</sup> (V10 - V13, V20 - V23, H)  
 2A = 2 connectors, power supply (left) + illuminated push button for additional lubrication, low-level (left) <sup>3,C</sup> and piston detector (right) <sup>4</sup> (M08 - M23)

#### Type of Connection

1 = square type connector (DIN 43650, type A) <sup>1</sup>  
 5 = bayonet plug, 4/3, DIN 72585-1 <sup>2</sup> (V10-V13, V20-V23, H)  
 6 = bayonet plug, 7/5, DIN 72585-13 (M08-M23)  
 7 = bayonet plug, 7/6, DIN 72585-1 <sup>3</sup> (V10-V13, V20-V23)

#### Connection Outside the Pump

00 = without socket outlet, without cable  
 01 = socket outlet, without cable <sup>1</sup>  
 10 = socket outlet, with 10 m cable <sup>1</sup>  
 11 = socket outlet, with 10 m ADR cable <sup>A,1</sup>  
 14 = socket for bayonet, with 10 m cable, 4/3 <sup>2</sup>, V10-V13, V 20-V23, no low level, no illuminated push button <sup>C</sup>  
 15 = socket for bayonet with 10 m cable, 7/5 <sup>3</sup>, M08-M23  
 16 = socket for bayonet, with 10 m cable, 7/6g <sup>3</sup>, V10-V13, V 20-V23, with low level or illuminated push button <sup>C</sup>  
 17 = socket for bayonet with 10 m ADR-Cable <sup>A</sup>, 4/3 <sup>2</sup>, (V10-V13, H)

#### P.C.B. for 12 / 24 VDC

V10 - V13 = adjustable pause and operating time <sup>1,2,3</sup>  
 H = for trailers and semi trailers <sup>1,2</sup>  
 without designation = without p.c.b. <sup>1,2</sup>  
 M08 - M23 = with microprocessor control <sup>3</sup> different model in accordance to the jumper position  
 No designation, pump without control p.c.b.

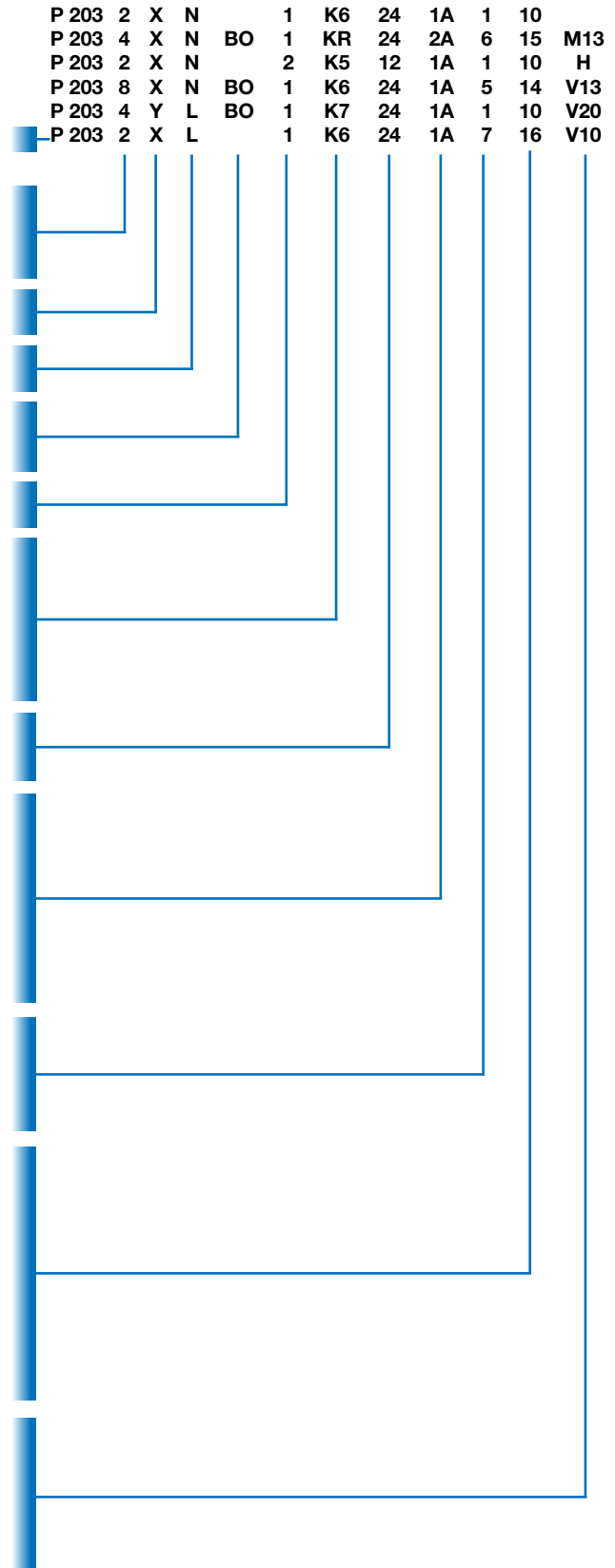
The Figures <sup>1,2,3</sup> are in conjunction with those of the "Type of connection" determining the connector you could use

<sup>A</sup> For hazardous material transport

<sup>B</sup> C7 = for supply of chisel paste

<sup>C</sup> low level for oil; the connection for low level is not taken into consideration

**Special order Quicklub pumps require a delivery time of six to eight weeks.**





### 233 Pumps with Data Logger QuickData

The 233 centralized lubrication pump is a powerful and robust compact multi-line pump that can drive up to three elements and is used in progressive (Quicklub or Modular Lube) automated lubrication systems. The 233 is ideal for mobile applications, rental machines and construction machines. Versatile, compact and economical, this pump is enhanced with low-level control, printed circuit board MDF01 with attached data logger module and a keypad with display.

#### QuickData Displays

- Current status and operating data
- Malfunctions of the lubrication system with the time of occurrence
- Remediating of the malfunction with date, time and duration of malfunction
- Low-level signal of reservoir and regular refilling
- Modifications in the pause time programming
- Number of automatically and manually triggered lube cycles as well as the corresponding lubricant consumption
- Power supply interruptions

The QuickData software is updated and all data can be read out by using an off-the-shelf, infrared IrDa-to-USB adapter. All indications enable the users to draw their conclusions regarding the condition, function, reliability, usability and duration of service of the machine or the device. All information can be analyzed and documented and is then available as a written protocol. The family of 233 pumps includes 12 and 24 VDC and 120 VAC pumps. They are available with 1, 2 or 3 elements in 5, 6 or 7 mm or with an adjustable output element. Reservoir sizes are 2, 4 or 8 liters. Refer to the pump identification code for a complete listing of available pump configurations.

### Model Specifications

| Model No.   | Description                    | Power   | Reservoir Capacity |                 |      | Grease | Low-Level Control | Printed circuit board |
|-------------|--------------------------------|---------|--------------------|-----------------|------|--------|-------------------|-----------------------|
|             |                                |         | Liters             | In <sup>3</sup> | Lbs. |        |                   |                       |
| 644-40824-1 | P233-2XL-1K6-24-2A5.10-MDF     | 24 VDC  | 2                  | 122             | 4    | Yes    | Yes               | Yes                   |
| 644-40824-2 | P233-2XLBO-1K6-24-2A5.10-MDF   | 24 VDC  | 2                  | 122             | 4    | Yes    |                   |                       |
| 644-40826-1 | P233-4XLBO-1K6-24-2A5.10-MDF   | 24 VDC  | 4                  | 244             | 8    | Yes    |                   |                       |
| 94434LDL    | P233-4XL-1K6-24-2A5.10-MDF     | 24 VDC  | 4                  | 244             | 8    | Yes    |                   |                       |
| 644-40827-1 | P233-8XLBO-1K6-24-2A5.10-MDF   | 24 VDC  | 8                  | 488             | 16   | Yes    |                   |                       |
| 94834LDL    | P233-8XL-1k6-24-2A5.10-MDF     | 24 VDC  | 8                  | 488             | 16   | Yes    |                   |                       |
| 644-41040-1 | P233-15XL-1K6-24-2A5.10-MDF    | 24 VDC  | 15                 | 915             | 30   | Yes    |                   |                       |
| 644-40868-1 | P233-2XL-1K6-12-2A5.10-MDF-A   | 12 VDC  | 2                  | 122             | 4    | Yes    |                   |                       |
| 644-40869-1 | P233-4XLBO-1K6-12-2A5.10-MDF-A | 12 VDC  | 4                  | 244             | 8    | Yes    |                   |                       |
| 644-40870-1 | P233-8XLBO-1K6-12-2A5.10-MDF-A | 12 VDC  | 8                  | 488             | 16   | Yes    |                   |                       |
| 644-40867-1 | P233-8XLBO-1K6-AC-3A6.15-MDF   | 120 VAC | 8                  | 488             | 16   | Yes    |                   |                       |

*These pumps do not include a pressure relief valve or proximity switch which must be ordered separately.*  
 Other technical data and dimensions are identical to the P203.



### Lidless Pump Upgrade Options

Now available: Retrofit kits to field replace current 4L and 8L Model 203 reservoirs to ones without lids. The retrofit kit promotes good maintenance practice and improves system performance by eliminating grease contamination through the removable lid. For each field retrofit kit, two part numbers need to be ordered (see model numbers below):

- One part number for the reservoir
- One part number for the fixed paddle

**Assembly is required.** The fixed paddle snaps in place and the new reservoir gasket replaces the old one.

| Model No.   | Description                    |
|-------------|--------------------------------|
| 544-32695-1 | Reservoir 4XN/4YN              |
| 444-70490-1 | Fixed Paddle assy, 4XNBO/4YNBO |
| 544-32696-1 | Reservoir 8XN/BYN              |
| 444-70491-1 | Fixed Paddle assy, 8XNBO/8YNBO |

### Lidded Pump Upgrade Option

These two kits are used to upgrade a 2-liter reservoir to either a 4- or 8-liter reservoir (with lid) pump. These upgrades are for pumps without low-level monitoring.

| Model No.   | Description            |
|-------------|------------------------|
| 544-32022-1 | 4-Liter Conversion Kit |
| 544-32023-1 | 8-Liter Conversion Kit |

### 15-Liter Upgrade Kit

Converts 4- and 8-liter model Quickclub pump to 15-liter reservoir with low level.

| Model No.   | Description                   |
|-------------|-------------------------------|
| 544-32957-2 | 4- and 8-Liter Conversion Kit |



## QLS 401

The QLS 401 features a newly enhanced stirring paddle in the reservoir to prevent grease separation—even with long refill intervals. All components including an internal pressure relief valve are part of the complete package. Standard features include a built-in controller with LED display and keypad for easy programming and monitoring, and a divider block with 6, 8, 12 or 18 outlets. The integrated, all-in-one system concept reduces installation time and costs. The 12 and 24 VDC models are available with bayonet, quarter-turn type plugs for improved protection in mobile applications (optional low-level control).

|                                       |  |
|---------------------------------------|--|
| <b>Operating Voltage:</b>             | 12 and 24 VDC<br>120 and 230 VAC, 50/60 Hz   |
| <b>Operating Current:</b>             | 12 VDC / 2.0 A<br>24 VDC / 1.0 A<br>120 VAC / 1.0 A<br>230 VAC / 0.5 A                   |
| <b>Operating Temperature:</b>         | -13° to 158°F / -25° to 70°C   |
| <b>Number of Outlets:</b>             | 6, 8, 12 or 18   |
| <b>Reservoir Capacity:</b>            | 61 in <sup>3</sup> / 1.0 L / 2.0 L   |
| <b>Protection:</b>                    | NEMA 4   |
| <b>Lubrication Cycle Time:</b>        | AC: 20 min. to 60 hours<br>DC: 4 min. to 6 hours   |
| <b>Number of Cycles:</b>              | For VDC: 1 to 5 cycles<br>For VAC – SSV6/SSV8: 1 to 3 cycles<br>For SSV12/SSV18: 1 cycle |
| <b>Timer Memory:</b>                  | Indefinite   |
| <b>Max. Operating Pressure:</b>       | 3000 psig / 205 bar  |
| <b>Output per Outlet &amp; Cycle:</b> | approx. 0.012 in <sup>3</sup> / approx. 0.2 cm <sup>3</sup>                              |
| <b>Lubricant:</b>                     | NLGI 2 grease  |
| <b>Weight</b>                         | 12.5 lbs. / 5.7 kg   |

## Model Specifications

| Model No.     | Valve Type | Valve Mount | Volt       | Cable     |
|---------------|------------|-------------|------------|-----------|
| P401 31202574 | SSV6       | Back        | 12 VDC     | 30' / 10m |
| P401 31402574 | SSV6       | Back        | 24 VDC     | 30' / 10m |
| P401 42601114 | SSV8       | Bottom      | 120 VAC-UL | none      |
| P401 42801114 | SSV8       | Bottom      | 230 VAC-UL | none      |
| P401 61202574 | SSV12      | Back        | 12 VDC     | 30' / 10m |
| P401 61402574 | SSV12      | Back        | 24 VDC     | 30' / 10m |
| P401 62601114 | SSV12      | Bottom      | 120 VAC-UL | none      |
| P401 62801114 | SSV12      | Bottom      | 230 VAC-UL | none      |
| P401 91202574 | SSV18      | Back        | 12 VDC     | 30' / 10m |
| P401 91402574 | SSV18      | Back        | 24 VDC     | 30' / 10m |
| P401 92601114 | SSV18      | Bottom      | 120 VAC-UL | none      |
| P401 92801114 | SSV18      | Bottom      | 230 VAC-UL | none      |





### QLS 401 for Remote Control

The QLS 401 for Remote Control allows customers to be in control of the lubrication process. The 24 VDC models monitor system cycling with a proximity switch. An external timer or PLC controls the interval between lube cycles. The 120 VAC models have no cycle monitoring and are on/off controlled by the user's external timer or PLC. The minimum pause time requirements should be followed when setting up the external controller. (Optional low-level control)

|                                       |   |
|---------------------------------------|---|
| <b>Operating Voltage:</b>             | 24 VDC<br>120 VAC, 50/60 Hz                                 |
| <b>Operating Current:</b>             | 24 VDC / 1.0 A<br>120 VAC / 1.0 A                           |
| <b>Operating Temperature:</b>         | -10° to 158°F / -25° to 70°C                                |
| <b>Number of Outlets:</b>             | 6, 8, 12 or 18  |
| <b>Reservoir Capacity:</b>            | 61 in <sup>3</sup> / 1.0 L                                  |
| <b>Protection:</b>                    | NEMA 4  |
| <b>Minimum Pause Time:</b>            | 4 min. DC models / 20 min. AC models                        |
| <b>Maximum Operating Time:</b>        | 25 min. DC models / 15 min. AC models                       |
| <b>Timer Memory:</b>                  | Indefinite  |
| <b>Maximum Operating Pressure:</b>    | 3000 psig / 205 bar   |
| <b>Output per Outlet &amp; Cycle:</b> | approx. 0.012 in <sup>3</sup> / approx. 0.2 cm <sup>3</sup> |
| <b>Lubricant:</b>                     | up to NLGI 2 grease   |
| <b>Weight</b>                         | 12.5 lbs. / 5.7 kg  |

### Model Specifications

| Model No.     | Valve Type | Valve Mount | Volt       |
|---------------|------------|-------------|------------|
| P401 31401110 | SSV6       | Back        | 24 VDC     |
| 650-40915-8   | SSV8       | Bottom      | 120 VAC-UL |
| P401 61401110 | SSV12      | Back        | 24 VDC     |
| 650-40915-9   | SSV12      | Bottom      | 120 VAC-UL |
| P401 91401110 | SSV18      | Back        | 24 VDC     |

# Quicklub® Lubrication Systems

## Selection Guide VDC and VAC-Pump Model 401



### Pump Models Examples of part numbers

P40100400114  
P40162400154

Pump 401 for grease. . . . . P401

#### SSV Divider Block

External, SSV 6, SSV 8<sup>2)</sup> (or SSV 12 and 18 without control p.c.b.) . . . . . 0  
 External, SSV 12, SSV 18<sup>2)</sup> . . . . . 1  
 SSV 6 (back) . . . . . 3  
 SSV 8 (bottom) . . . . . 4  
 SSV 12 . . . . . 6  
 SSV 18 . . . . . 9

<sup>2</sup> Note: For external divider block application only use the specific divider blocks SSV...KNQLS.

#### SSV Divider Block Position

External divider block. . . . . 0  
 Back (vertical order) . . . . . 1  
 Bottom<sup>3</sup> (horizontal order) . . . . . 2

<sup>3</sup> Note: Do not use QLS 401 with SSV block in bottom-mounting position for mobile applications. Do not install the pump in areas exposed to shock.

#### Operating Voltage

12 VDC<sup>1</sup> . . . . . 2  
 24 VDC<sup>1</sup> . . . . . 4  
 120 VAC<sup>2</sup> (with control p.c.b. only) . . . . . 6  
 230 VAC<sup>2</sup> (with control p.c.b. only) . . . . . 8

<sup>1</sup> Note: Standard 12 and 24 VDC pump models for mobile applications can be supplied with 10-meter (30') electrical cable.

<sup>2</sup> Note: Standard 120 and 230 VAC pump models for industry are supplied without electrical cable.

#### Reservoir

1 liter reservoir without low-level control . . . . . 0  
 1 liter reservoir with low-level control . . . . . 1  
 2 liter reservoir without low-level control . . . . . 2  
 2 liter reservoir with low-level control . . . . . 3

#### Number of Possible Connections

-1A = connection left-side (square type), supply voltage . . . . . 0  
 -2A = 2 connections (square type) . . . . . 1  
     1 connection left-side, supply voltage . . . . . 1  
     1 connection right-side, low-level control or fault indication . . . . . 1  
 1A = 1 connection (quarter-turn bayonet-type) supply voltage;  
     low-level control or fault indication (DC models only) . . . . . 2

#### Type of Plug Connector

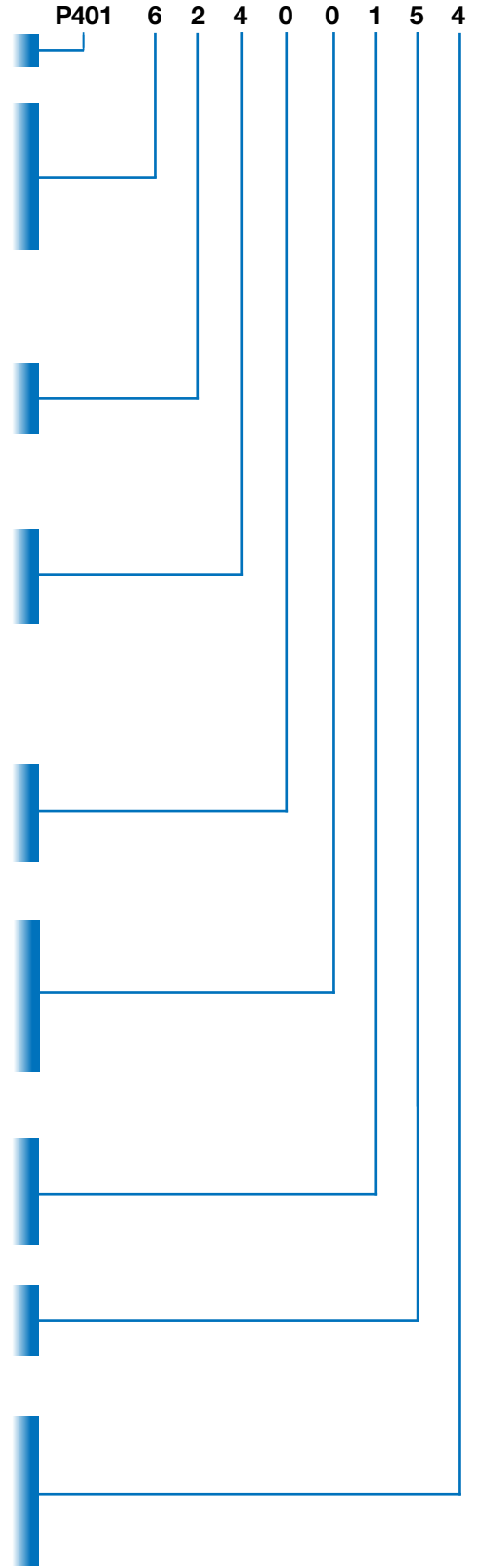
Square-type, acc. to DIN 43650 type of construction A . . . . . 1  
 (industrial application)  
 Quarter-turn bayonet-type plug, DIN 72585-1, 4-pole  
 (mobile application; DC models only) . . . . . 5

#### Electrical Connectors

With socket, without cable . . . . . 1  
 With socket, with cable 10 m. . . . . 5  
 With socket, with cable 10 m (DC models only) . . . . . 7

#### Control p. c. b.

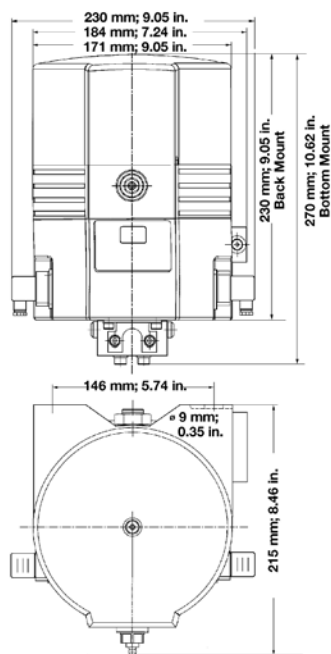
p. c. b. without time control (DC models) . . . . . 0  
 p. c. b. S4:  
 Normally closed or normally open contact (programmable),  
 monitored: 1 to 5 cycles (DC models) . . . . . 1  
     1 cycle with SSV 12, SSV 18 (AC models) . . . . . 1  
     1 to 3 cycles with SSV 6, SSV 8 (AC models) . . . . . 4





## QLS 301

It's compact, rugged, easy to install and easy to use. It has a long list of standard features including built-in controller with LED display and keypad for easy programming, system cycle monitoring, a built-in low-level control and remote monitoring capability. For those who thought the reduced downtime and improved safety of automated lubrication were out of reach, and for those waiting for a cost-effective system for their smaller machinery, the reliable QLS 301 is the answer. It's automatic lubrication "made easy." Same as QLS 401 except has spring-loaded follower allowing for mounting pump horizontally.

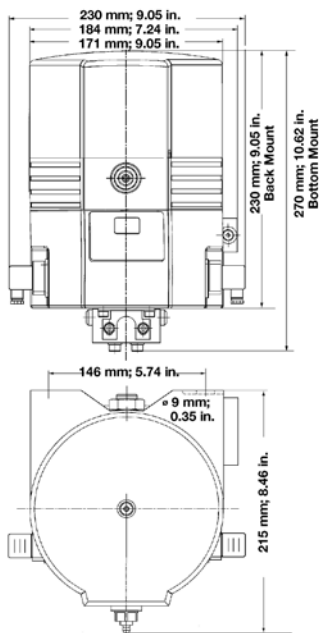


|                                       |  |
|---------------------------------------|--|
| <b>Operating Voltage:</b>             | 12 and 24 VDC<br>120 and 230 VAC, 50/60 Hz   |
| <b>Operating Current:</b>             | 12 VDC / 2.0 A<br>24 VDC / 1.0 A<br>120 VAC / 1.0 A<br>230 VAC / 0.5 A                   |
| <b>Operating Temperature:</b>         | -10° to 158°F / -25° to 70°C   |
| <b>Number of Outlets:</b>             | 6, 8, 12 or 18   |
| <b>Reservoir Capacity:</b>            | 61 in <sup>3</sup> / 1.0 L   |
| <b>Protection:</b>                    | NEMA 4   |
| <b>Lubrication Cycle Time:</b>        | AC: 20 min. to 60 hours<br>DC: 4 min. to 60 hours  |
| <b>Number of Cycles:</b>              | For VDC: 1 to 5 cycles<br>For VAC – SSV6/SSV8: 1 to 3 cycles<br>For SSV12/SSV18: 1 cycle |
| <b>Timer Memory:</b>                  | Indefinite   |
| <b>Maximum Operating Pressure:</b>    | 3000 psig / 205 bar  |
| <b>Output per Outlet &amp; Cycle:</b> | approx. 0.012 in <sup>3</sup> / approx. 0.2 cm <sup>3</sup>                              |
| <b>Lubricant:</b>                     | NLGI 2 grease  |
| <b>Weight</b>                         | 12.5 lbs. / 5.7 kg   |

## Model Specifications

| Model No.     | Valve Type | Valve Mount | Volt   | Cable     |
|---------------|------------|-------------|--------|-----------|
| P301 31211154 | SSV6       | Back        | 12 DC  | 30' / 10m |
| P301 31411154 | SSV6       | Back        | 24 DC  | 30' / 10m |
| P301 42611114 | SSV8       | Bottom      | 120 AC | none      |
| P301 42811114 | SSV8       | Bottom      | 230 AC | none      |
| P301 61211154 | SSV12      | Back        | 12 DC  | 30' / 10m |
| P301 61411154 | SSV12      | Back        | 24 DC  | 30' / 10m |
| P301 62611114 | SSV12      | Bottom      | 120 AC | none      |
| P301 62811114 | SSV12      | Bottom      | 230 AC | none      |
| P301 91211154 | SSV18      | Back        | 12 DC  | 30' / 10m |
| P301 91411154 | SSV18      | Back        | 24 DC  | 30' / 10m |
| P301 92611114 | SSV18      | Bottom      | 120 AC | none      |
| P301 92811114 | SSV18      | Bottom      | 230 AC | none      |

**Note:** All models include low-level.



### QLS 311

Unit includes pump, control monitor and metering valve and is ready to go “out of the box.” Pump includes built-in controller with LED display and keypad for easy programming, system cycle monitoring, a built-in low-level control and remote monitoring capability. Unit offers the advantages of automated lubrication, including reduced downtime and improved safety, to machinery large and small.

|                                       |  |
|---------------------------------------|--|
| <b>Operating Voltage:</b>             | 12 and 24 VDC<br>120 and 230 VAC; 50/60 Hz   |
| <b>Operating Current:</b>             | 12 VDC / 2.0 A<br>24 VDC / 1.0 A<br>120 VAC / 1.0 A<br>230 VAC / 0.5 A                   |
| <b>Operating Temperature:</b>         | -10° to 158°F / -25° to 70°C   |
| <b>Number of Outlets:</b>             | 6, 8, 12 or 18   |
| <b>Reservoir Capacity:</b>            | 61 in <sup>3</sup> / 1.0 L   |
| <b>Protection:</b>                    | NEMA 4   |
| <b>Lubrication Cycle Time:</b>        | AC: 20 min. to 60 hours<br>DC: 4 min. to 60 hours  |
| <b>Number of Cycles:</b>              | For VDC: 1 to 5 cycles<br>For VAC – SSV6/SSV8: 1 to 3 cycles<br>For SSV12/SSV18: 1 cycle |
| <b>Timer Memory:</b>                  | Indefinite   |
| <b>Max. Operating Pressure:</b>       | 1160 psig / 80 bar   |
| <b>Output per Outlet &amp; Cycle:</b> | approx. 0.012 in <sup>3</sup> / approx. 0.2 cm <sup>3</sup>                              |
| <b>Lubricant:</b>                     | oil with at least 40cSt.   |
| <b>Weight</b>                         | 12.5 lbs. / 5.7 kg   |

### Model Specifications

| Model No.     | Valve Type | Valve Mount | Volt   | Cable     |
|---------------|------------|-------------|--------|-----------|
| P311 31211154 | SSV6       | Back        | 12 DC  | 30' / 10m |
| P311 61211154 | SSV12      | Back        | 12 DC  | 30' / 10m |
| P311 91211154 | SSV18      | Back        | 12 DC  | 30' / 10m |
| P311 31411154 | SSV6       | Back        | 24 DC  | 30' / 10m |
| P311 61411154 | SSV12      | Back        | 24 DC  | 30' / 10m |
| P311 91411154 | SSV18      | Back        | 24 DC  | 30' / 10m |
| P311 42611114 | SSV8       | Bottom      | 120 AC | none      |
| P311 42811114 | SSV8       | Bottom      | 230 AC | none      |
| P311 62611114 | SSV12      | Bottom      | 120 AC | none      |
| P311 92611114 | SSV18      | Bottom      | 120 AC | none      |
| P311 62811114 | SSV12      | Bottom      | 230 AC | none      |
| P311 92811114 | SSV18      | Bottom      | 230 AC | none      |

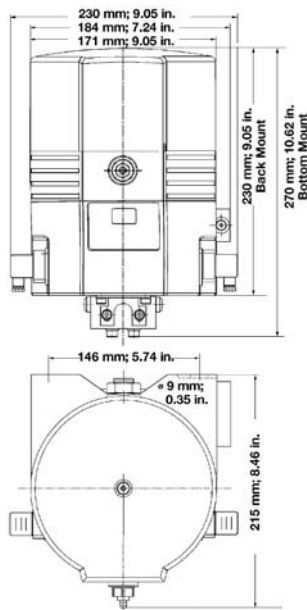
**Note:** All models come with a low-level indicator.



### QLS 301/311 for Remote Control

The QLS 301/311 for Remote Control allows customers to be in control of the lubrication process. The 24 VDC models monitor system cycling with a proximity switch. An external timer or PLC controls the interval between lube cycles. The 120 VAC models have no cycle monitoring and are on/off controlled by the user's external timer or PLC. The minimum pause time requirements should be followed when setting up the external controller.

|                                       |   |
|---------------------------------------|---|
| <b>Operating Voltage:</b>             | 24 VDC<br>120 VAC, 50/60 Hz   |
| <b>Operating Current:</b>             | 24 VDC / 1.0 A<br>120 VAC / 1.0 A                                   |
| <b>Operating Temperature:</b>         | -10° to 158°F / -25° to 70°C  |
| <b>Number of Outlets:</b>             | 6, 8, 12 or 18  |
| <b>Reservoir Capacity:</b>            | 61 in <sup>3</sup> / 1.0 L  |
| <b>Protection:</b>                    | NEMA 4  |
| <b>Minimum Pause Time:</b>            | 4 min. DC models / 20 min. AC models                                |
| <b>Maximum Operating Time:</b>        | 25 min. DC models / 15 min. AC models                               |
| <b>Timer Memory:</b>                  | Indefinite  |
| <b>Maximum Operating Pressure:</b>    | <b>Grease:</b> 3000 psig / 205 bar<br><b>Oil:</b> 1160 psi / 80 bar |
| <b>Output per Outlet &amp; Cycle:</b> | approx. 0.012 in <sup>3</sup> / approx. 0.2 cm <sup>3</sup>         |
| <b>Lubricant:</b>                     | up to NLGI 2 grease or oil with at least 40cSt.                     |
| <b>Weight</b>                         | 12.5 lbs. / 5.7 kg  |



### Model Specifications

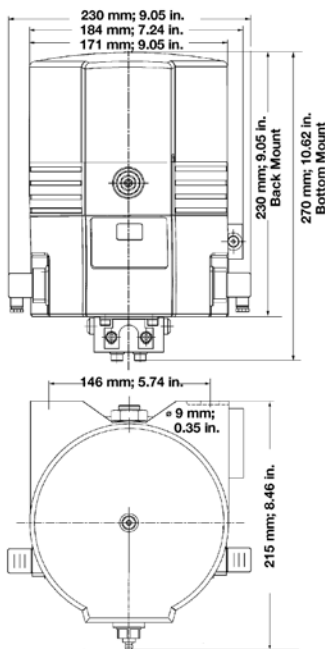
| Model No.     | Valve Type | Valve Mount | Volt    | Lubricant |
|---------------|------------|-------------|---------|-----------|
| P301 31411110 | SSV6       | Back        | 24 VDC  | Grease    |
| P311 31411110 | SSV6       | Back        | 24 VDC  | Oil       |
| P311 61411110 | SSV12      | Back        | 24 VDC  | Oil       |
| 650-40768-3   | SSV8       | Bottom      | 120 VAC | Grease    |
| 650-40768-4   | SSV12      | Bottom      | 120 VAC | Grease    |
| 650-40768-5   | SSV18      | Bottom      | 120 VAC | Grease    |
| 650-40765-4   | SSV8       | Bottom      | 120 VAC | Oil       |



### QLS 421

Accurate lubrication without the need for continuous power—that’s what over-the-road trailers need. That’s exactly what Lincoln’s QLS 421 supplies. With a unique controller card that keeps track of the time a trailer is in use by monitoring its vibration, the QLS 421 delivers the precise lubrication an OTR trailer requires exactly when it’s needed—by using the power of the trailer’s brake lights.

Because it doesn’t need power to monitor the time between lubrication events, the QLS 421 is ready when its controller card says “go.” And the QLS 421 keeps lubricating each time the trailer’s brakes are applied until its controller card adds up the “on times” and determines that the pre-set time for a complete lubrication cycle has been reached. The QLS 421 features an enhanced stirring paddle to help prevent grease separation in applications with long refill intervals.



|   |                                     |
|---|-------------------------------------|
| <b>Operating Voltage:</b>                 | 12 and 24 VDC                       |
| <b>Operating Current:</b>                 | 12 VDC / 2.0 A<br>24 VDC / 1.0 A    |
| <b>Operating Temperature:</b>             | -10° to 158°F / -25° to 70°C        |
| <b>Number of Outlets:</b>                 | 6, 12 or 18                         |
| <b>Reservoir Capacity:</b>                | 61 in³ / 1.0 L                      |
| <b>Protection:</b>                        | NEMA 4                              |
| <b>Time Between Cycles:</b>               | 1 hour to 16 hours                  |
| <b>On Time Range:</b>                     | 1 to 32 min.                        |
| <b>Timer Memory:</b>                      | Indefinite                          |
| <b>Maximum Operating Pressure:</b>        | 3000 psig / 205 bar                 |
| <b>Output per Outlet per Valve Cycle:</b> | approx. 0.012 in³ / approx. 0.2 cm³ |
| <b>Lubricant:</b>                         | up to NLGI 2 grease                 |
| <b>Weight</b>                             | 12.5 lbs. / 5.7 kg                  |

### Model Specifications

| Model No.     | Voltage | Valve Type | Reservoir Size (L) | Valve Mount | Cable               |
|---------------|---------|------------|--------------------|-------------|---------------------|
| P421 91402531 | 24 VDC  | SSV18      | 1 liter            | Back        | 19 feet<br>6 meters |
| P421 61202531 | 12 VDC  | SSV12      |                    |             |                     |
| P421 91202531 |         | SSV18      |                    |             |                     |
| P421 61222531 |         | SSV12      | 2 liter            |             |                     |



### HTL Hydraulic Lubricator Pump for Hammers

- Delivers precise lubrication every time the hammer cycles
- Increase productivity—no work interruption
- Reduces machine repairs and replacement costs

Arms and breakers move constantly and exert enough force to demolish a building or repair roads in a tough environment filled with grit and debris. OEMs recommend bearing lubrication of that hammer every two hours to achieve optimal performance and to hold down maintenance and repair costs. However, deadline-driven operators rarely halt work to grease the hammer, which can lead to breakdowns that grind down productivity and inflate repair expenses. Lincoln's HTL Pumps make precise, consistent lubrication a reality. Now your operator can lubricate the hammer without leaving the cab. The pumps attach directly to the hammer, and your operator, with the push of a pedal, automatically sends a single shot of hydraulic fluid to the pump. Then the pump gives one shot of grease to lubricate the bearing points. When the operator's foot comes off the pedal, pressure releases the spring in the pump so it's ready to lubricate again.

Applications: construction OEMs, hydraulic hammer retrofits, demolition attachments and medium to larger breakers/hammers

- Withstands vibrations of an operating hammer
- Travels with hammer, perfect for rental equipment or hammers used on various machines
- Hydraulic power supply
- Pedal-actuated
- Attached grease fitting allows for manual filling and fast priming of pump
- Uses standard 14.5-ounce grease cartridges and handles chisel paste
- To adjust output, metering plugs are available (0.006 in<sup>3</sup> [0.1cm<sup>3</sup>] to 0.031 in<sup>3</sup> [0.5cm<sup>3</sup>])
- Convenient visual low level indicator

|                               |                                  |
|-------------------------------|----------------------------------|
| <b>Operating Temperature:</b> | -10°F to +180°F / -23°C to +80°C |
| <b>Hydraulic Port:</b>        | SAE #4 ( 1/16"-20 UNF) O-ring    |
| <b>Pump Outlet:</b>           | SAE #4 ( 1/16"-20 UNF) O-ring    |
| <b>Weight (Empty):</b>        | 16.3 lbs. / 7.4 kg               |
| <b>Weight (Full):</b>         | 17.3 lbs. / 7.8 kg               |

### Specifications

| Model No.   | 85429   | 85425               | 85424   | 85414              |
|---|---|---------------------|---|--------------------|
| <b>Hydraulic Ratio at Max. Output and Pressure*</b> | 2.4:1   | 0.7:1               |   |                    |
| <b>Max. Hydraulic Operating Pressure:</b>           | 2600 psig (112 bar)   | 5000 psig (345 bar) |   |                    |
| <b>Max. Recharge (or Vent) Pressure:</b>            | 400 psig (28 bar)   | 1100 psig (75 bar)  | 600 psig (41 bar)   | 1100 psig (75 bar) |
| <b>Max. Lube Outlet Pressure:</b>                   | 6500 psig (450 bar)   |                     |   |                    |
| <b>Output per Stroke (Std. Metering Plug)</b>       | .018 cu. in. (0.3 cc) Std.<br>.006 - .031 cu. in. (0.1 - .5 cc) Optional* |                     | .031 cu. in. (0.5 cc) Std.<br>.006 - .031 cu. in. (0.1 - .5 cc) Optional* |                    |
| <b>Grease Reservoir Volume:</b>                     | 14.5 oz.  |                     |   |                    |

\*Optional metering plugs are available for different output volume. See Pump Output Adjustment chart below.

### Pump Output Adjustment Metering Plug

| Model No. | Output per Stroke                           |
|-----------|---|
| 271924    | 0.006 in <sup>3</sup> / 0.1 cm <sup>3</sup> |
| 271925    | 0.012 in <sup>3</sup> / 0.2 cm <sup>3</sup> |
| 271926 *  | 0.018 in <sup>3</sup> / 0.3 cm <sup>3</sup> |
| 271927    | 0.031 in <sup>3</sup> / 0.5 cm <sup>3</sup> |

\*Note: Standard plug included with pump

### 203 Pumps Designed for Hammer Applications\*

| Model No. | Description              | Low Level | Timer | Element      | Reservoir | Voltage | Pressure Relief Valve |
|-----------|--------------------------|-----------|-------|--------------|-----------|---------|-----------------------|
| 271374    | P203-4XNBO-1C7-24-1A1.10 | No        | No    | 7mm Chisel   | 4L        | 24      | Yes                   |
| 272633    | P203-4XLBO-1C7-24-2A1.10 | Yes       | No    | 7mm Chisel   | 4L        | 24      | Yes                   |
| 272643    | P203-4XLBO-1C7-12-2A1.10 | Yes       | No    | 7mm Chisel   | 4L        | 12      | Yes                   |
| 273426    | P203-4XLBO-1K5-24-2A1.10 | Yes       | No    | 5mm Std.     | 4L        | 24      | Yes                   |
| 272632    | P203-8XLBO-1C7-24-2A1.10 | Yes       | No    | 7mm Chisel   | 8L        | 24      | Yes                   |
| 273422 ** | P203-8XLBO-2K7-24-2A1.10 | Yes       | No    | 2 x 7mm Std. | 8L        | 24      | Yes                   |
| 273425    | P203-8XLBO-1K7-24-2A1.10 | Yes       | No    | 7mm Std.     | 8L        | 24      | Yes                   |

\* Chisel paste compatibility must be confirmed by Lincoln technical.

\*\* Pump comes with 272634 kit installed for double output



### 203 Hammer Pump Accessories

| Model No.   | Description                        |
|-------------|------------------------------------|
| 272634      | Double output kit (front and side) |
| 274149      | Triple output kit                  |
| 600-28750-1 | 7mm chisel paste element           |
| 274847      | Double output kit (side to side)   |



### Push-Button Switches

| Model No.   | Description               | Color | Voltage |
|-------------|---------------------------|-------|---------|
| 664-36070-5 | Illuminated Manual Switch | Green | 12 VDC  |
| 664-36070-6 | Illuminated Manual Switch | Green | 24 VDC  |
| 664-34005-5 | Illuminated Manual Switch | Red   | 12VDC   |
| 664-34005-6 | Illuminated Manual Switch | Red   | 24 VDC  |
| 237-13381-2 | Replacement Bulb          |       | 12 VDC  |
| 237-13381-3 | Replacement Bulb          |       | 24 VDC  |
| 236-10580-1 | Replacement Lens          | Green |         |
| 236-14261-9 | Replacement Lens          | Red   |         |



### Pressure Relief Valves

| Model No.     | Pressure Relief Setting | Supply Line Connection        |
|---------------|-------------------------|-------------------------------|
| 270864        | 4000 psi / 270 bar      | 1/8" NPT (female)             |
| 624-28894-1   | 5076 psi / 350 bar      | 6 mm Compression Nut*         |
| 624-28895-1   | 5076 psi / 350 bar      | 8 mm Compression Nut          |
| 624-28931-1** | 5076 psi / 350 bar      | 6 mm Quickclinc*              |
| 304-19614-1   | Adapter                 | 6 mm Stem x 1/8" NPT (female) |

\* 6 mm x 1/8" NPT supply line adapter (Model 304-19614-1) can be used to convert supply line connection to 1/8" NPT for these models.

\*\* Return to tank

Note: Model 226-14105-5 (psi relief adapter) is required for 4-, 8- and 15-liter pump models



### Proximity Switches

Electric grease pumps with Feedback Monitoring require purchase of one of the following proximity switches:

| Model No.   | Description                      | Use with Corresponding Pump Connection |
|-------------|----------------------------------|--|
| 519-34339-3 | Bayonet 3 m (9.8') cable length  | 4 - bayonet quarter turn               |
| 519-34339-4 | Bayonet 7 m (23.0') cable length | 4 - bayonet quarter turn               |
| 519-34271-2 | 3 m (9.8') with open end         |  |
| 519-34271-7 | AMP 3 m (9.8') cable length      | 4 - AMP (existing field models)        |
| 519-34271-8 | AMP 7 m (23.0') cable length     | 4 - AMP (existing field models)        |



### Pump Elements\*



| Model No.   | Piston Diameter | Lubricant Output                                     | Lubricant   | Max. Operating Pressure | Connection Thread |
|-------------|-----------------|--|---|-------------------------|-------------------|
| 600-26875-2 | 5 mm (5K)       | .122 in <sup>3</sup> /min / 2 cm <sup>3</sup> /min   | Oil or Grease   | 5000 psi / 350 bar      | G 1/4"            |
| 600-26876-2 | 6 mm (6K)       | .171 in <sup>3</sup> /min / 2.8 cm <sup>3</sup> /min | Oil or Grease   |                         |                   |
| 600-29304-1 | 6 mm            |  | Beverage Industry Grease or Oil **  |                         |                   |
| 600-26877-2 | 7 mm (7K)       |  | Oil or Grease   |                         |                   |
| 600-28750-1 | 7 mm (7C)       | .244 in <sup>3</sup> /min / 4 cm <sup>3</sup> /min   | Hammer Chisel Paste ***   |                         |                   |
| 600-29110-1 | 7 mm (S7)       |  | Silicon Based Grease  |                         |                   |
| 600-29185-1 | 7 mm (B7)       |  | Silicon Based Grease ****   |                         |                   |
| 655-28716-1 | 7 mm (KR)       |  | .04 in <sup>3</sup> /min to .18 in <sup>3</sup> /min<br>.7 cm <sup>3</sup> /min to 3 cm <sup>3</sup> /min |                         |                   |

- \* Grease and chisel paste compatibility should be confirmed with Lincoln Technical
- \*\* Galvanized pump elements to withstand corrosion
- \*\*\* Special element designed to be used for applications on hydraulic hammers
- \*\*\*\* With bypass check valve
- \*\*\*\*\* Adjustable lubricant output pump element.

### Model 85830 ALS Fill Pump

Air-operated grease pump designed to fill pump reservoirs from drums. Includes pump, drum cover, high pressure hose, outlet swivel, control valve and universal swivel, whip hose, coupler and universal follower. For use with 120 lb. drums (not included). Fill nipple is not included and must be ordered separately.

| Model No. | Bare Pump  | Pump Ratio | Max. Working Pressure | Max. Air Pressure   | Air Inlet         | Lube Outlet       | Hose   |
|-----------|------------|------------|-----------------------|---------------------|-------------------|-------------------|--|
| 85830     | V325120000 | 25:1       | 3750 psi<br>258 bar   | 150 psi<br>10.3 bar | 3/8" NPT (female) | 1/4" NPT (female) | 3/8" ID x 10' SAE 100R2 high pressure hose (4000 psi/275 bar working pressure) |



85830 shown with drum (not included)

### ALS Fill Pump Accessories

| Model No. | Description                                    |
|-----------|--|
| 277059    | Fill nipple (long) for 203 pump                |
| 277057    | Grease coupler, 3/8" NPTF (female) inlet       |
| 674       | Two wheel hand cart (to make package portable) |
| 80895     | Caster base (to make package portable)         |

### Quicklub Pump Accessories

| Model No.   | Description  |
|-------------|--|
| 638-37549-1 | Manual grease filler pump—2-liter  |
| 638-37549-2 | Manual grease filler pump—4- and 8-liter and 2-liter flat type   |
| 246322      | Remote push-button manual lube upgrade kit for pumps with square DIN connectors (field replacement only) |
| 256276      | Remote push-button manual lube kit for pumps with bayonet round connectors (6 wire cord)                 |
| 273921      | Universal quickfill adapter for 2-, 4- and 8-liter pumps   |
| 538-36763-5 | Fill adapter for 4- and 8-liter pumps  |
| 538-36763-4 | 90° fill adapter for 4- and 8-liter pumps  |
| 538-36763-1 | Fill adapter for 2-liter pumps   |
| 241052      | 7.5 Amp fuse   |
| 241053      | Standard fuse holder   |
| 276409      | Heavy duty fuse holder   |
| 664-34195-9 | 45' 5 wire power cord (round bayonet)  |



638-37549-1



273921

Lubricant flows through supply lines between the pump and divider valves, then through feed lines between the divider valves and the bearing. Tubing and/or pipe sizes are determined after considering both the length of the line and the specific lubricant intended for use in the system.

Your Lincoln representative can assist you in the proper selection of supply and feed line material to optimize your application.

Listed below is a simplified outline of the installation components offered. For a complete listing of products, please refer to the pages in this catalog entitled Fittings, Adapters and Accessories. Additional installation componentry can be found in the Installation Components Catalog.

### TUBING

Hydraulic, Steel, Stainless Steel and Nylon  
Single and Multiple Tube Clamps  
Heavy-Duty, Standard-Duty, Threaded Sleeve and Snap-On Coupler Tube Fittings  
Quickline™ Tubing Adapter  
Zerk-Lock™ Grease Fitting Adapters  
Non-Metallic

### PIPING

Seamless  
Continuous Welded  
Forged Fittings  
Malleable Iron Fittings  
316 Stainless Steel Pipe and Fittings  
Stainless Steel Fittings  
Galvanized Pipe, Threaded Plug and Fittings

### ACCESSORIES

Supply, Feed and Bulk Feed Line Hose  
Air Hose  
Kits for Hose Repair  
Heavy-Duty Air Line Quick Disconnects

### AIR CONTROL AND ACCESSORIES

Manual Shut-Off Valves  
Pressure Gauges  
Lubricant Filters and Strainers

### AIRCARE™ AIR PREPARATION SYSTEMS

Modular Air Line Filters, Regulators and Lubricators  
Integrated/Modular Filter/Regulator with Gauge  
Modular Air Line Combination Units  
High-Capacity Air Line Filters, Regulators and Lubricators  
High-Capacity Air Line Combination Units  
Miniature Air Line Components—Air Line Filter, Regulator and Lubricator  
Miniature Air Line Combination Units  
Modular Air Line Equipment Accessories:  
Lockout Valve, Quick Clamp, Quick Clamp Wall Mounting Bracket, Porting Block, Quick Mount Pipe Adaptors, Manifold Block, Pressure Switch, Panel Nut, Wall Mount Bracket, Tamper resistant Cover and Seal Wire  
  
Air Line Equipment Accessories:  
Wall Mount Bracket, High Capacity; Mounting Bracket and Nut, Miniature; Pressure Gauges

### PIPE FITTINGS

Reducing Bushings  
Nipples  
Couplings  
Reducing Couplings  
Street Ells  
Tees  
Crosses  
Adapter Unions  
Elbows  
Pipe Fitting Adapters  
Supply Line Swivels  
Feed Line Swivels  
Anchor and Junction Blocks