

## FR & DQ Metaray® Heaters

- 375 - 500 Watt Lamp Replacement
- 1,000 Watt Ceramic Replacement
- 120 Volt

### Applications

- Spot Heating
- Asphalt and Vinyl Tile Glue Softening
- Thawing
- Touch-Up Paint Curing

### Features

**More Durable Heat Source** for existing infrared lamp ovens. Glassless, glareless, breakproof.

**Impervious to Splashed Paint** or other liquids.

**Uniform Work Coverage**, higher wattages and easy controllability deliver better results from the same sockets.

**Chromalox® Alloy Tubular Elements** with long cold terminal ends and medium screw base are utilized in Metarays®.

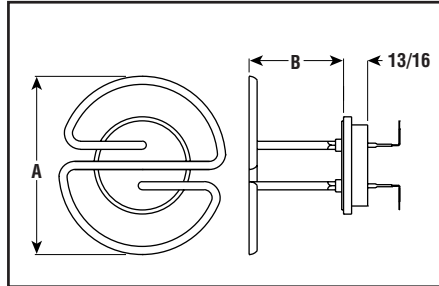
**Type DQ** provides non-splintering replacement for hollow cylinder ceramic radiant heaters; delivers a flatter "stripeless" radiant heat pattern. Can be spaced closer to work.

**Type FR** replaces G-30 lamps. Type FRR replaces R-40 lamps.

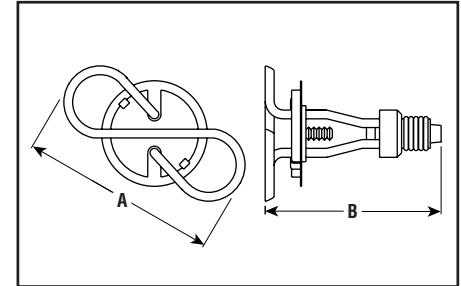
**Type FR and FRR** have secondary insulation and centering index ring for double wall ovens.



**DQ — Dimensions (Inches)**



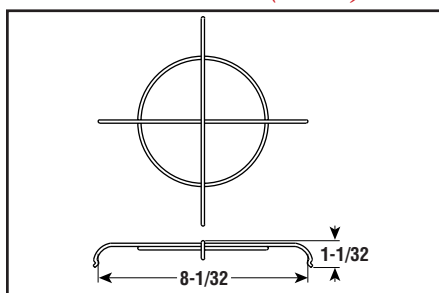
**FR & FRR — Dimensions (Inches)**



### Specifications and Ordering Information

Replacement Lamps	Watts/120V	Dimensions (In.)		Model	Stock	PCN	Wt. (Lbs.)
		A	B				
<b>FR — Medium Screw Base — for Equipment with Built-in Reflectors</b>							
G-30	375	5-5/8	5	<b>FR-38</b>	S	111940	1.5
G-30	500	5-5/8	5	<b>FR-385</b>	S	111958	1.5
G-30	500	6-3/4	5-9/32	<b>FR-50</b>	S	111966	1.5
<b>FRR — Medium Screw Base — for Double-Wall Ovens</b>							
R-40	375	5-5/8	7-3/8	FRR-37	NS	111974	2
<b>DQ — Medium Bi-Post Base — to Replace Cylindrical Ceramic Heaters</b>							
—	1,000	5-1/2	2-11/16	<b>DQ-100</b>	S	113814	1.5
<b>Stock Status:</b> S = stock AS = assembly stock NS = non-stock <b>To Order—</b> Specify model, PCN, watts, volts, quantity and grille (if needed). 1. Protective grille, optional. Specify GR-50 (PCN 111931).							

**Grille — Dimensions (Inches)**



METAL SHEATH  
RADIANT