



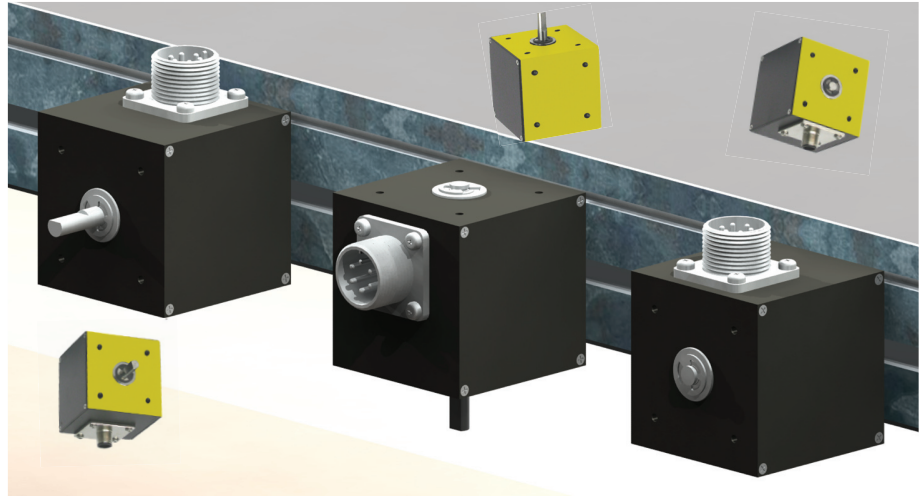
Cube Solutions

A cube solution for every application

Get the Accu-Coder™ Advantage with the original Cube Encoders



- Compatible with most:
 - ✓ Programmable controllers
 - ✓ Electronic counters
 - ✓ Motion controllers
 - ✓ Motor drives
- Single channel, quadrature, and timed pulse
- Versatile housing styles, from Standard to Ultra-Heavy Duty
- Resolutions to 10,000 CPR
- Single and double shaft options
- Unidirectional or bidirectional output
- Single chip design
- Many connector options
- Opto-ASIC Accuracy
- Shaft sizes from 1/4" to 5/8"
- Sealing to IP65
- High Temp Options
- Resolutions up to 10,000 CPR
- End mount, bottom mount or shaft mount puts the shaft and connector location in perfect alignment for an easy installation.



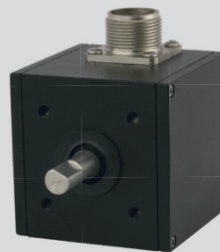
Cube Housing Options

Standard Housing



- The Original Cube Encoder
- Single or Double Ended Shafts
- Tapped Mounting Holes on 3 Sides
- Multiple Shaft Sizes
- 2.25" x 2.25" Cube
- Thousands of Configurations

Industrial Housing



- More Robust Standard Cube
- 2.5" x 2.5" Cube
- Wall Thickness 0.187"
- IP65 Shaft Seal
- Single or Double Ended Shafts
- Tapped Mounting Holes on 3 Sides

Heavy Duty Housings

All Heavy Duty housings provide mechanical isolation via a flexible coupling to an internally mounted Cube encoder. Extra thick 0.250" walls provide additional protection from the outside environment.

HD12



- Heavy Duty
- Popular Housing Style
- Sealing to IP65
- 40 lb Radial Load
- 30 lb Axial Load

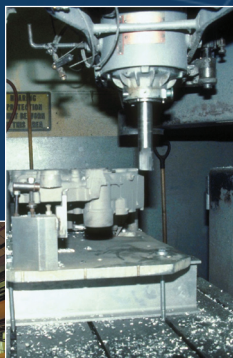
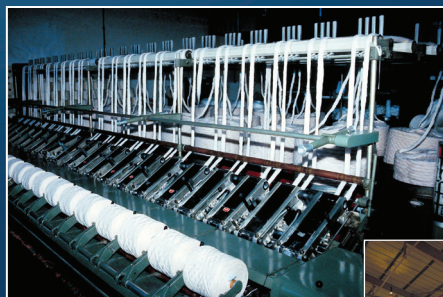
HD10



- ULTRA Heavy Duty
- Sealing to IP65
- 95 lb Radial Load
- 60 lb Axial Load
- 0.500" or 0.625" shaft diameter
- Stainless Steel Shaft

Endless Applications

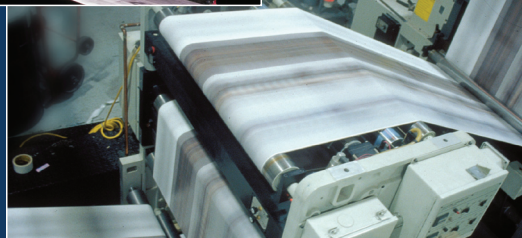
"Cut-to-Length" is the most common Cube application. You'll see Cube Encoders in the paper, textile, metal, plastic, and wood/timber industries.



Cutting

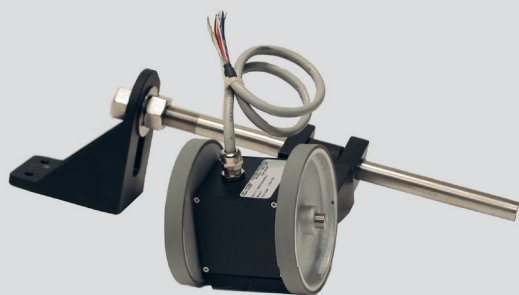


Conveying



Textiles

Cube Accessories

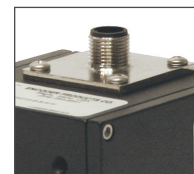


Double and single pivot mounting brackets mount measuring wheels to Cube

The LCA converts a Cube encoder into a linear measurement encoder



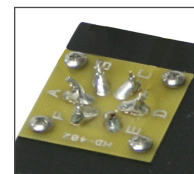
6-pin, 7-pin, and 10-pin MS



5-pin, and 8-pin M12



Gland Nut Cable



Solder or Screw Terminal

Get the Accu-Coder™ Advantage

Who Is Encoder Products Company?

Established in 1969, Encoder Products Company (EPC) is a global manufacturer of Accu-Coder™ brand encoders, and the largest privately held encoder manufacturer in the US. Operating from the belief that every customer deserves a quality product, EPC is known for building reliable, durable encoders that will last you for years. With superior customer service, expert support, and short lead times – even overnight, with expedite options – discover the Accu-Coder™ Advantage for your next encoder solution.

Exceptional Value

EPC's competitive pricing ensures you'll get the best value.

Superior Design

- ✓ First to use Opto-ASIC technology
- ✓ Designers of the original Cube Encoder
- ✓ Creators of the Tru-Trac™ linear encoder solution

Customer Service

When you call EPC, you'll talk to a live person. Our Customer Service Representatives are available from 5:00 am to 4:30 pm Pacific Time.

Quick Delivery

- ✓ Standard delivery in 4 to 6 days
- ✓ Next-day expedite option available on some models

3 Year Warranty

EPC's offers an industry-leading 3 Year Warranty. (2 years on High Temp Options)

Outstanding Quality

EPC is known for the outstanding quality of our products.

- ✓ ISO 9001 Certified
- ✓ RoHS And WEEE Compliance



ACCU»»CODER™
by Encoder Products Company