



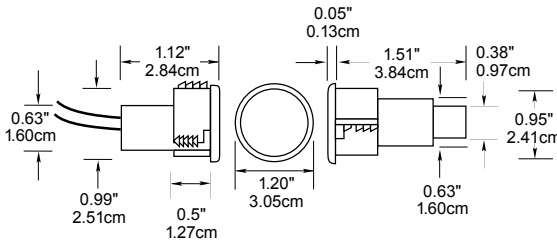
# 1" Diameter Steel Door With Wire Leads 1078 Series

## Applications

- Special design for special mounting
- Self-lock mounting
- Rugged construction
- 15/16" dia. hole required
- UL approved for specific fire doors

## General Specifications

Enclosure	ABS Plastic
Temperature Range	-40°F to 150°F (-40°C to 65°C)
Environmental	Hermetically Sealed Reed Switch Encapsulated in Polyurethane
NEMA Rating	1, 2, 3, 4, 4x, 5, 6, 12
Protection Class	IP 67
Response Time	1 msec max.
Life Cycles	100,000 Under Full Load 10,000,000 Under Dry Circuit
Lead Types/O.D.	#22 wire / 0.05"(0.15cm)
Color Choices	Natural(N), Mahogany(M), Grey(G)
UL/ULC Listed	All Models



## Order Information

## Electrical Specifications

Part Number	Contact <sup>1</sup> Configuration	Load Rating (AC/DC)	Switching Voltage (AC/DC)	Switching Current (AC/DC)	Contact Resistance	Sense Range <sup>2</sup> Nominal	Lead Length
1078-G, M, N	N.O.	7.5W/VA	100V	0.5A	0.2 Ohms	0.5" (1.3cm)	1'
1078W-M, N	N.O.	7.5W/VA	100V	0.5A	0.2 Ohms	1.0" (2.5cm)	1'
1076-G, M, N	SPDT	3W/VA	30V	0.25A	0.2 Ohms	0.5" (1.3cm)	1'
1076H-M, N	SPDT	3W/VA	30V	0.25A	0.2 Ohms	0.5" (1.3cm)	1'
1076W-M, N	SPDT	3W/VA	30V	0.25A	0.2 Ohms	1.0" (2.5cm)	1'
1076D-M, N	DPDT	3W/VA	30V	0.25A	0.2 Ohms	0.4" (1.0cm)	1'

**Warning— Each electrical rating is an individual maximum and cannot be exceeded!**

<sup>1</sup> Configuration with actuator away from the switch

<sup>2</sup> Proximity of ferrous materials usually reduces sense range — typically by 50%. The shape and type of material cause a wide diversity of effects. Testing is required to determine actual sense range for specific applications. As measured on a nonferrous surface.

Gap distances are nominal make distance ± 20%. Gap Specifications are for switch to make. Break distance is approximately 1.1 to 1.5 times make.

<sup>3</sup> Biased for higher defeat resistance.