

Animatics Corporation  
 3200 Patrick Henry Dr  
 Santa Clara  
 CA 95054, USA  
**Phone:** (408) 748 8721  
**Fax:** (408) 748 8725  
**E-mail:** service@animatics.com

## NEMA Size 23

### BACKLASH

ratios 3 : 1 to 10 : 1  
 standard = 6 arc-minutes  
 low backlash unit = 3 arc-minutes (add - L to part #)

ratio 16 : 1 to 100 : 1  
 standard = 10 arc-minutes  
 low backlash unit = 7 arc-minutes (add - L to part #)

### EFFICIENCY

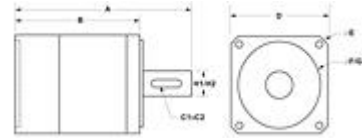
ratios 3 : 1 to 10 : 1 =90%  
 ratio 16 : 1 to 100: 1 =85%

**INPUT RPM RANGE** 0 to 5000 rpm

**TEMPERATURE RANGE** -20 to 250 deg F

**PEAK TORQUE** 15% above continuous rating

Note-Repeated peak torque loading may cause failure.



Results 1 - 13 of 13

Item #	List Price	Ratio	GI1 - Gear Inertia at input x 10-5	GI2 - Gear Inertia at input x 10-5	W1 - Weight	W2 - Weight
GH23P3	QUOTE	3:1	12.2 lb-in-sec <sup>2</sup>	1.379 kg-m <sup>2</sup>	2.2 lbs	1 kg
GH23P4	QUOTE	4: 1	5.24 lb-in-sec <sup>2</sup>	0.592 kg-m <sup>2</sup>	2.2 lbs	1 kg
GH23P5.5	QUOTE	5.5: 1	2.65 lb-in-sec <sup>2</sup>	0.299 kg-m <sup>2</sup>	2.2 lbs	1 kg
GH23P7	QUOTE	7:1	1.93 lb-in-sec <sup>2</sup>	0.218 kg-m <sup>2</sup>	2.2 lbs	1 kg
GH23P10	QUOTE	10:1	1.35 lb-in-sec <sup>2</sup>	0.153 kg-m <sup>2</sup>	2.2 lbs	1 kg
GH23P16	QUOTE	16: 1	5.32 lb-in-sec <sup>2</sup>	0.601 kg-m <sup>2</sup>	3.63 lbs	1.65 kg
GH23P22	QUOTE	22:1	2.7 lb-in-sec <sup>2</sup>	0.305 kg-m <sup>2</sup>	3.63 lbs	1.65 kg
GH23P28	QUOTE	28:1	1.96 lb-in-sec <sup>2</sup>	0.221 kg-m <sup>2</sup>	3.63 lbs	1.65 kg
GH23P40	QUOTE	40: 1	1.36 lb-in-sec <sup>2</sup>	0.154 kg-m <sup>2</sup>	3.63 lbs	1.65 kg
GH23P49	QUOTE	49: 1	1.9 lb-in-sec <sup>2</sup>	0.215 kg-m <sup>2</sup>	3.63 lbs	1.65 kg
GH23P55	QUOTE	55: 1	1.34 lb-in-sec <sup>2</sup>	0.151 kg-m <sup>2</sup>	3.63 lbs	1.65 kg
GH23P70	QUOTE	70:1	1.33 lb-in-sec <sup>2</sup>	0.15 kg-m <sup>2</sup>	3.63 lbs	1.65 kg
GH23P100	QUOTE	100: 1	1.33 lb-in-sec <sup>2</sup>	0.15 kg-m <sup>2</sup>	3.63 lbs	1.65 kg

Results 1 - 13 of 13