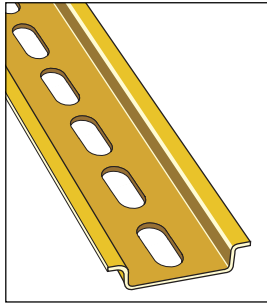
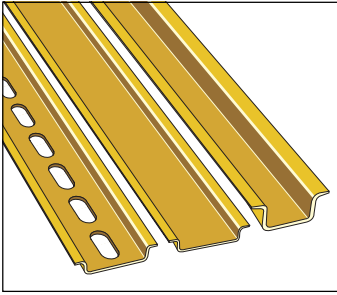
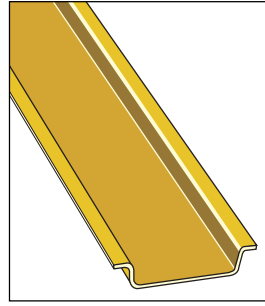
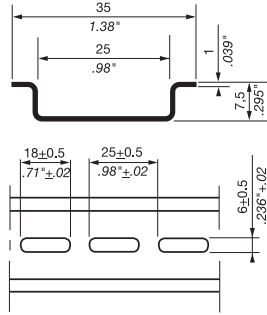


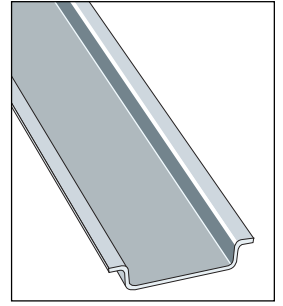
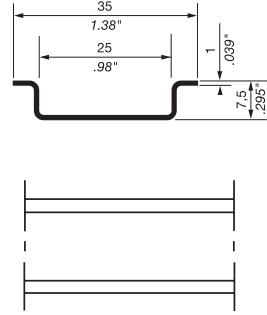
### Mounting rails Symmetrical - DIN 3



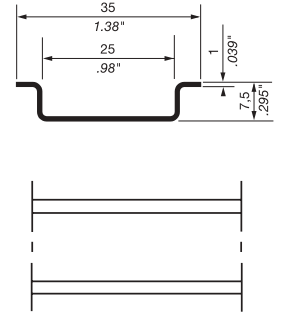
In compliance with EN 50022 standard  
(DIN 46277-3 - NFC 63015) DIN 3



In compliance with EN 50022 standard  
(DIN 46277-3 - NFC 63015) DIN 3



In compliance with EN 50022 standard  
(DIN 46277-3 - NFC 63015) DIN 3



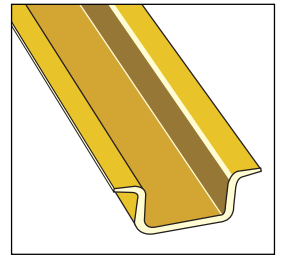
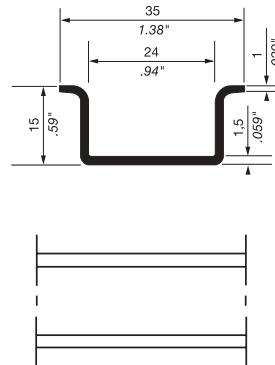
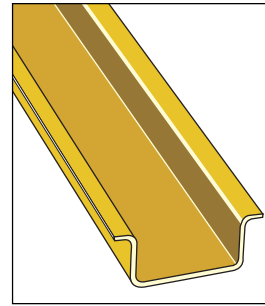
#### RAIL CURRENT CARRYING CAPACITY

Rail	Material	Current (A)	Wire size AWG	mm <sup>2</sup>
PR30	Steel	65	8	10
PR3.Z2 - PR3.G2	Steel	87	6	16
PR5	Steel	125	4	25
PR4	Steel	143	2	35

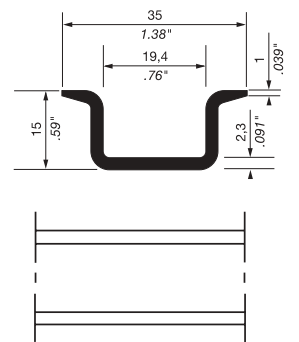
Type	P/N	Description
PR30	0173 220.05	Zinc bichromate plated steel, prepunched, length 2 m 6'6" (78") approx. The length and prepunched cut out dimensions are approximate.

Type	P/N	Description
PR3.Z2	0174 300.17	Zinc bichromate plated steel, length 2 m 6'6" (78") approx.

Type	P/N	Description
PR3.G2	0164 800.03	White, passivated galvanized steel, length 2 m 6'6" (78") approx.



In compliance with EN 50022 standard  
(NFC 63015) DIN 3



Type	P/N
------	-----

Type	P/N
------	-----

Type	P/N
PR5	0168 700.22

Zinc bichromate plated steel, length 2 m 6'6" (78") approx.

Type	P/N
PR4	0168 500.12

Zinc bichromate plated steel, length 2 m 6'6" (78") approx.